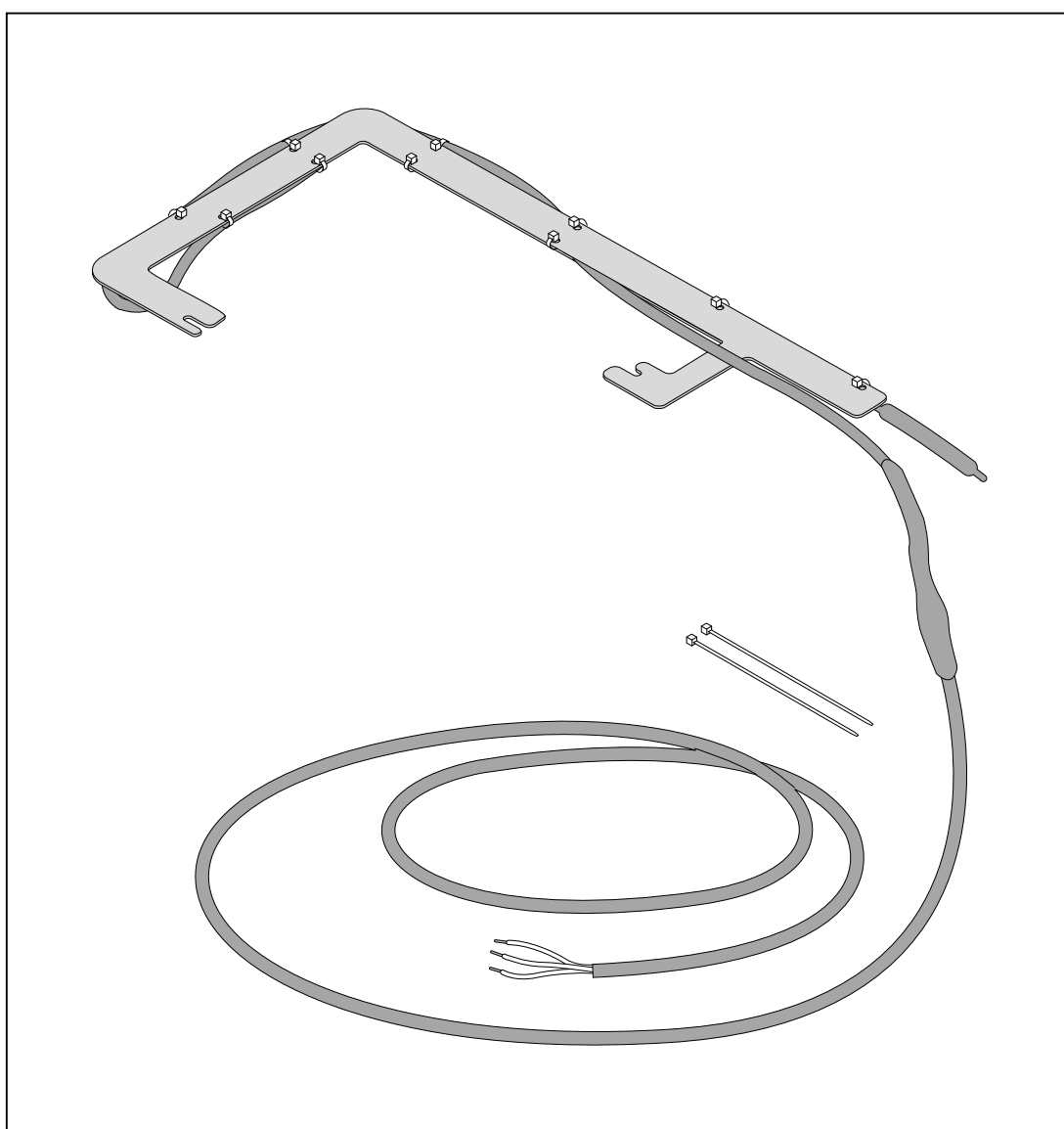


–weishaupt–

manual

Installation instructions



1 Product description

1 Product description

1.1 Function

The trace heating is equipped with integral thermostat.

The thermostat switches the trace heating:

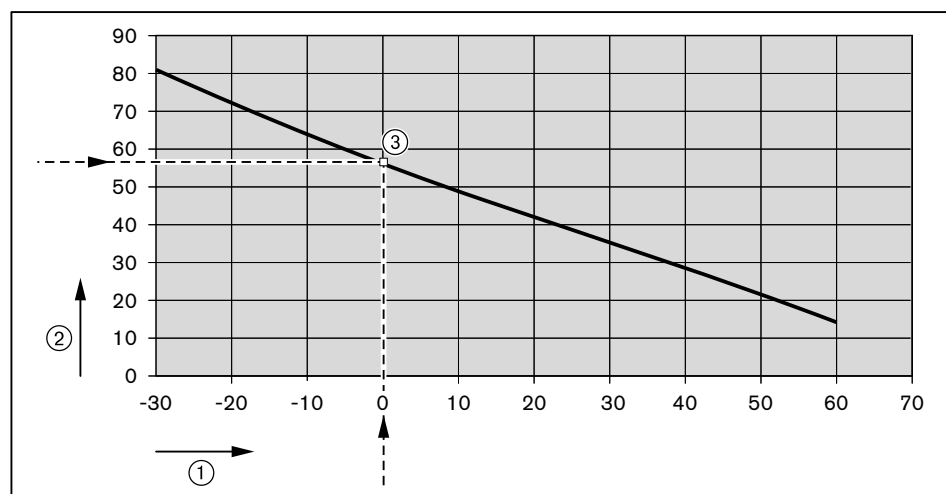
- on, when the external temperature drops to 3 °C,
- off, when the external temperature rises to 12 °C.

1.2 Electrical data

Mains voltage/Mains frequency

230 V/50 Hz

Consumption:



- ① Temperature in °C
- ② Consumption in W
- ③ Example: at 0 °C 57 W

2 Installation

2 Installation

Observe safety instructions given in the installation and operating manual of the outdoor unit.

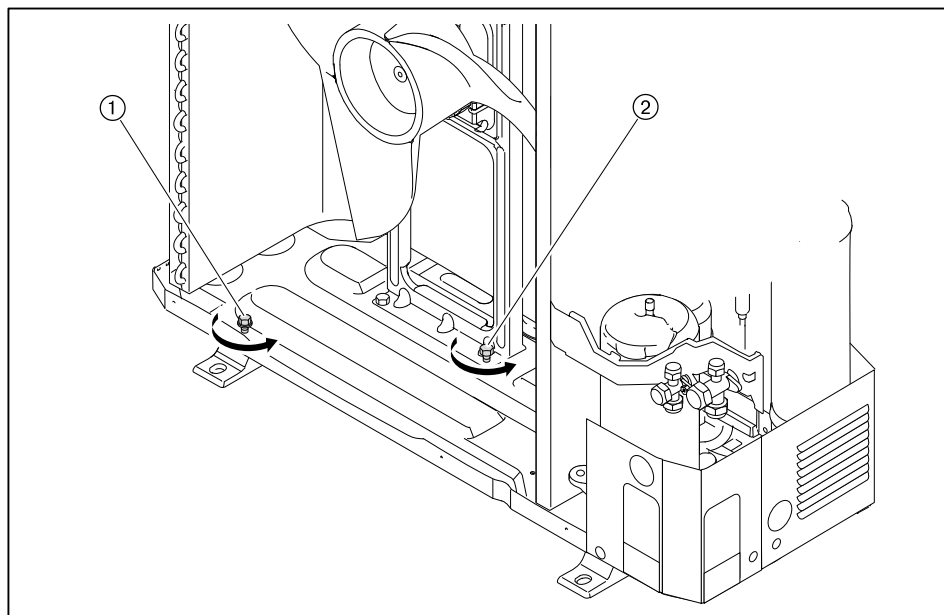


Risk of electric shock

Working on the unit when voltage is applied can lead to electric shock.

- ▶ Isolate unit from mains prior to carrying out work.
- ▶ Safeguard against accidental re-start.

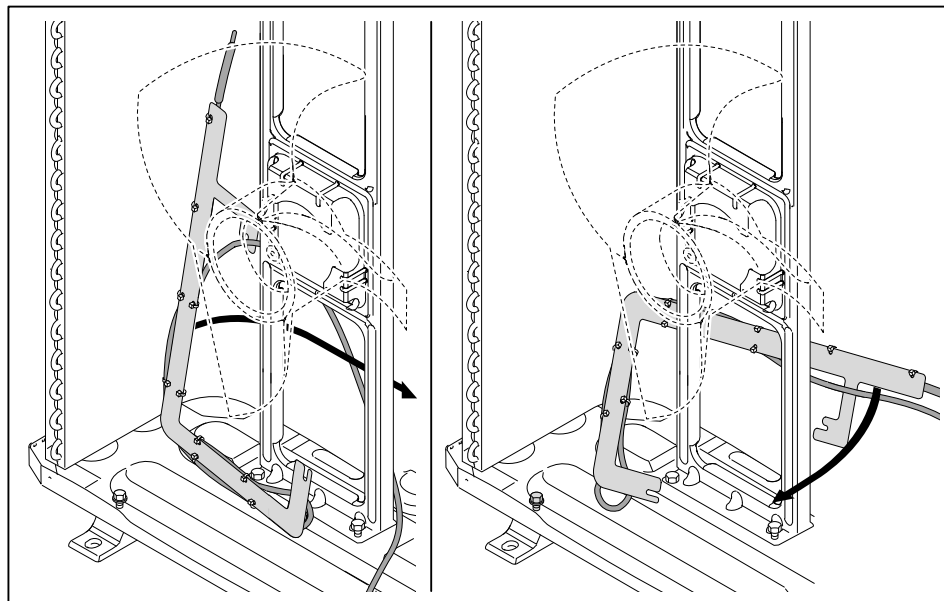
- ▶ Remove front panel, side panel and lid from outdoor unit (see installation and operating manual of outdoor unit).
- ▶ Undo screws ① and ②.



2 Installation

Wear protective gloves.

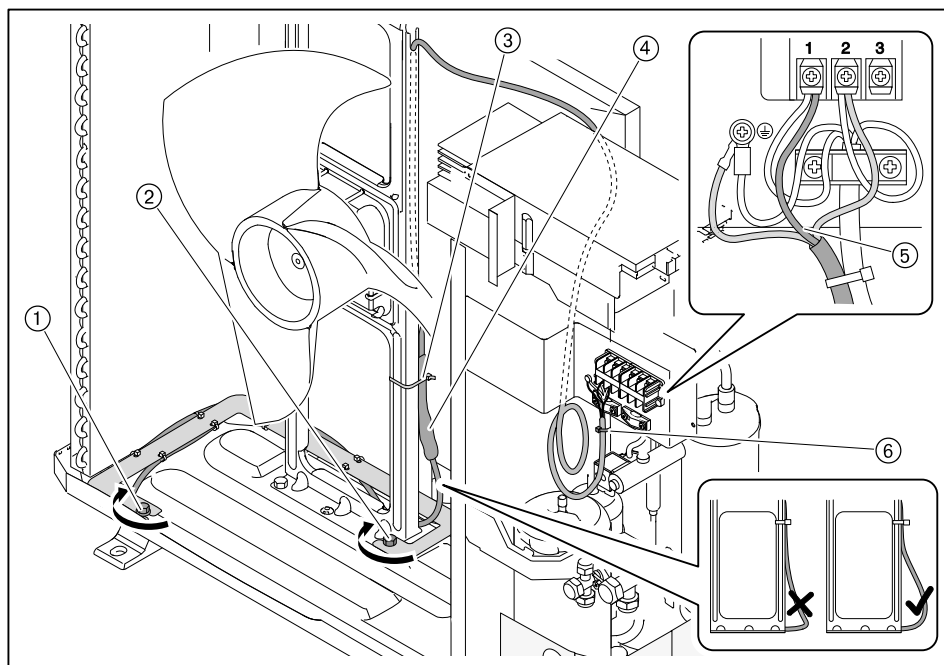
- Insert trace heating sideways, taking care not to damage the fins.



2 Installation

Outdoor unit WWP L 7 AERS

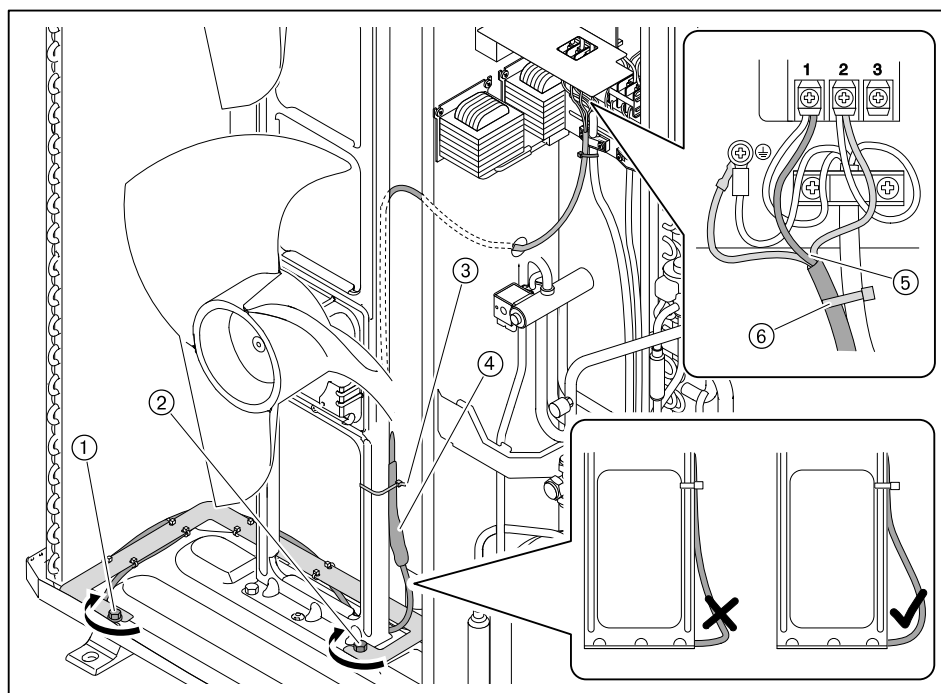
- ▶ Tighten screws ① and ②.
- ▶ Lay the cable along the side panel and secure to the retaining frame using cable ties ③, whilst ensuring that neither the cable nor the thermostat ④ are kinked.
- ▶ Connect wires ⑤ and secure with cable ties ⑥ in such a way that they do not touch any hot or moving components.



2 Installation

Outdoor unit WWP L 11 AERS and WWP L 15 ARS

- ▶ Tighten screws ① and ②.
- ▶ Install cable through the cable entry grommet and secure to the retaining frame using cable ties ③, whilst ensuring that neither the cable nor the thermostat ④ are kinked.
- ▶ Connect wires ⑤ and secure with cable ties ⑥ in such a way that they do not touch any hot or moving components.



3 Notes

3 Notes

The complete program: Reliable technology and prompt, professional service

	<p>W Burners up to 570 kW</p> <p>The compact burners, proven millions of times over, are economical and reliable. Available as gas, oil and dual fuel burners for domestic and commercial applications.</p> <p>The purflam® burner version with special mixing head gives almost soot-free combustion of oil with greatly reduced NOx emissions.</p>	<p>Wall-hung condensing boilers for oil and gas up to 240 kW</p> <p>The wall-hung condensing boilers WTC-GW and WTC-OW have been developed to meet the highest demands in ease of operation and efficiency.</p> <p>Modulating operation means these units operate quietly and economically.</p>	
	<p>monarch® WM Burners and Industrial Burners up to 11,700 kW</p> <p>These legendary industrial burners are durable and versatile.</p> <p>Numerous variations of oil, gas and dual fuel burners meet a wide range of applications and capacity requirements.</p>	<p>Floor standing condensing boiler for oil and gas up to 1,200 kW</p> <p>The floor-standing boilers WTC-GB and WTC-OB are efficient, low in emissions and versatile. Higher capacities are achieved by cascading up to four gas-fired condensing boilers.</p>	
	<p>WK Burners up to 28,000 kW</p> <p>These industrial burners of modular construction are adaptable, robust and powerful.</p> <p>Even on the toughest industrial applications these oil, gas and dual fuel burners operate reliably.</p>	<p>Solar systems</p> <p>The stylish flat-plate collectors are the ideal complement for any Weishaupt heating system. They are suitable for solar water heating and for combined heating support.</p> <p>With versions for on-roof, in-roof and flat roof installations, solar energy can be utilised on almost any roof.</p>	
	<p>multiflam® Burners up to 17,000 kW</p> <p>This innovative Weishaupt technology for medium and large burners provides minimum emission values at capacities up to 17 MW.</p> <p>The burners with the patented mixing head are available for oil, gas and dual fuel operation.</p>	<p>Water heaters / energy storage tanks</p> <p>This attractive program for domestic water heating includes classic water heaters, solar storage tanks, heat pump storage tanks and energy storage tanks.</p>	
	<p>MCR Technology / Building Automation from Neuberger</p> <p>From control panels to complete building management systems - at Weishaupt you can find the entire spectrum of modern control technology. Future orientated, economical and flexible.</p>	<p>Heat pumps up to 130 kW</p> <p>The heat pump range offers solutions for the utilisation of heat from the air, the soil or ground water.</p> <p>Some systems are also suitable for cooling buildings.</p>	
	<p>Service</p> <p>Weishaupt customers can be assured that specialist knowledge and tools are available whenever they are needed. Our service engineers are fully qualified and have extensive product knowledge, be it for burners, heat pumps, condensing boilers or solar collectors.</p>	<p>Geothermal probe drilling</p> <p>With its daughter company, BauGrund Süd, Weishaupt also offers geothermal probe and well drilling. With the experience of more than 10,000 systems and more than 2 million meters of drilling, BauGrund Süd offers a comprehensive service program.</p>	