

–weishaupt–

manual

Installation and operating instruction



1	User instructions	4
1.1	Target group	4
1.2	Symbols in the manual	4
1.3	Guarantee and Liability	5
2	Safety	6
2.1	Designated application	6
2.2	Safety symbols on the device	6
2.3	Safety measures	6
2.3.1	Personal protective equipment (PPE)	6
2.3.2	Normal operation	7
2.3.3	Electrical work	7
2.4	Alterations to the construction of the equipment	7
2.5	Noise emission	7
2.6	Disposal	7
3	Product description	8
3.1	Type key	8
3.2	Type and serial number	8
3.3	Function	9
3.3.1	Air supply	9
3.3.2	Oil supply	10
3.3.3	Electrical components	11
3.3.4	Program sequence	12
3.4	Technical data	14
3.4.1	Approval data	14
3.4.2	Electrical data	14
3.4.3	Ambient conditions	14
3.4.4	Permissible fuels	14
3.4.5	Emissions	15
3.4.6	Rating	16
3.4.7	Dimensions	17
3.4.8	Weight	17
4	Installation	18
4.1	Installation requirements	18
4.2	Selecting a nozzle	19
4.3	Burner installation	20
4.3.1	Rotate burner by 180° (optional)	21
5	Installation	22
5.1	Oil supply	22
5.2	Electrical connection	24
6	Operation	25
6.1	Operating panel	25
6.2	Display	25

7	Commissioning	26
7.1	Prerequisite	26
7.1.1	Connect measuring devices	27
7.1.2	Setting values	28
7.2	Adjusting the burner	30
7.3	Concluding work	31
7.4	Check combustion	32
8	Shutdown	33
9	Servicing	34
9.1	Notes on servicing	34
9.2	Service plan	36
9.3	Service position	37
9.4	Replace nozzle	38
9.5	Set ignition electrodes	39
9.6	Remove mixing head	40
9.7	Set mixing head	41
9.8	Removing the air regulator	42
9.9	Removing and refitting oil pump	43
9.10	Removing and refitting fan wheel	44
9.11	Remove burner motor	45
9.12	Removing and refitting oil pump filter	46
9.13	Replacing the fuse	47
10	Troubleshooting	48
10.1	Procedures for fault conditions	48
10.1.1	Illuminated push button off	49
10.1.2	Illuminated push button red	50
10.1.3	Illuminated push button flashes	53
10.2	Operating problems	54
11	Technical documentation	55
11.1	Conversion table unit of pressure	55
11.2	Wiring diagram	56
12	Project planning	58
12.1	Oil supply	58
12.2	Continuous running fan or post-purge	61
13	Spares	62
14	Notes	74
15	Key word index	78

1 User instructions

Translation of original
operating instructions



1 User instructions

This manual forms part of the equipment and must be kept on site.

Carefully read the manual prior to working on the unit.

1.1 Target group






The manual is intended for the operator and qualified personnel. It should be observed by all personnel working with the unit.

Work on the unit must only be carried out by personnel who have had the relevant training and instruction.

Persons with limited physical, sensory or mental capabilities may only work on the unit if they are supervised or have been trained by an authorised person.

Children must not play with the unit.

1.2 Symbols in the manual

 DANGER	Danger with high risk. Non observance can lead to serious injury or death.
 WARNING	Danger with medium risk. Non observance can lead to serious injury or death.
 CAUTION	Danger with low risk. Non observance can cause injury to personnel.
 NOTICE	Non observance can cause damage to the equipment and environmental damage.
	Important information
►	Requires direct action
✓	Result after an action
▪	Itemisation
...	Range of values
02	Replacement character for digits, e. g. language key for Print No.
Display text	Font for text that appears in the display

1.3 Guarantee and Liability

Guarantee and liability claims for personal and equipment damage are excluded, if they can be attributed to one or more of the following causes:

- non approved application
- non-observance of the manual
- operation with faulty safety equipment
- continual operation despite a fault
- improper installation, commissioning, operation and service
- repairs, which have been carried out incorrectly
- the use of non original Weishaupt parts
- force majeure
- unauthorised modifications made to the unit
- the installation of additional components, which have not been tested with the unit
- the installation of combustion chamber inserts, which impede full flame formation
- unsuitable fuels
- defects in the inlet lines

2 Safety

2.1 Designated application

The burner is suitable for operation on heat exchangers to EN 303 and EN 267.

If the burner is not used on combustion chambers to EN 303 and EN 267, a safety assessment of combustion and flame stability during individual process conditions and of the shutdown limits of the combustion plant has to be carried out and documented.

The Technical data must be adhered to [ch. 3.4].

The combustion air must be free from aggressive compounds (e.g. Halogens).

If the combustion air in the boiler room is contaminated, increased cleaning and servicing will be required. In this case ducted air intake is recommended.

The burner should preferably be operated indoors.



If the burner is not operated indoors, weather protection is required to protect from rain and direct sunlight. The ambient conditions must be adhered to [ch. 3.4.3].

Improper use could:

- endanger the health and safety of the user or third parties
- cause damage to the unit or other material assets

The unit is only suitable for domestic application. For other applications, the suitability must be proven by means of a risk assessment. The unit is not suitable for use in industrial processes.

2.2 Safety symbols on the device

Symbol	Description	Position
	Warning of electrical voltage	Burner housing
	Dangerous electric voltage	Ignition unit

2.3 Safety measures

Safety relevant fault conditions must be eliminated immediately.

Components, which show increased wear and tear or whose design lifespan is or will be exceeded prior to the next service should be replaced as a precaution.

The design lifespan of the components is listed in the service plan [ch. 9.2].

2.3.1 Personal protective equipment (PPE)

Use the necessary personal protective equipment for all work.

2.3.2 Normal operation

- All labels on the unit must be kept in a legible condition.
- Stipulated settings, service and inspection work should be carried out at regular intervals.
- Only operate the unit with its cover closed.
- Ensure combustion air supply is unimpeded.

2.3.3 Electrical work

When working on live components please ensure you:

- observe the accident prevention instructions DGUV Regulation 3 and adhere to local directives
- use tools in accordance with EN IEC 60900.

The device contains components, which could be damaged by electrostatic discharge (ESD).

When working on circuit boards and contacts:

- do not touch circuit boards or contacts
- if necessary, take ESD protective measures

2.4 Alterations to the construction of the equipment

All conversions require written approval from Max Weishaupt GmbH.

- No additional components may be fitted, which have not been tested for use with the equipment.
- Do not use combustion chamber inserts, which hinder flame burnout.
- Use only original Weishaupt replacement parts.

2.5 Noise emission

The noise emissions are determined by the acoustic behaviour of all components fitted to the combustion system.

Prolonged exposure to high noise levels can lead to loss of hearing. Provide operating personnel with protective equipment.

Noise emissions can further be reduced with a sound attenuator.

2.6 Disposal

Dispose of all materials and components in a safe and environmentally friendly way at an authorised location. Observe local regulations.

3 Product description

3 Product description

3.1 Type key

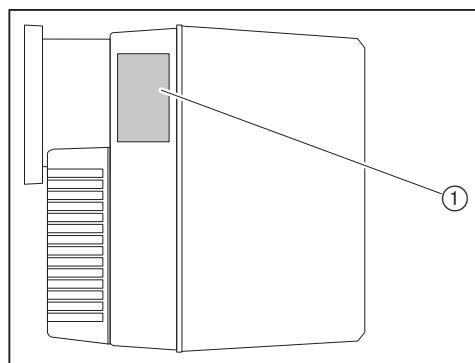
WL5/2-B

Type

W	Series: Compact burner
L	Fuel: Oil EL
5	Size
2	Ratings size
B	Construction

3.2 Type and serial number

The type and serial number on the type plate clearly identify the product. They are required by Weishaupt's customer service department.



① Name plate

Type: _____	Ser. No.: _____
--------------------	------------------------

3.3 Function

3.3.1 Air supply

Air damper

The air damper regulates the air quantity required for combustion. The air damper position is set using a setting screw on the air damper or the actuator (optional).

At burner shutdown the the actuator (optional) automatically closes the air damper. This reduces heat loss in the heat exchanger.

Fan wheel

The fan wheel supplies the air from the air intake housing to the combustion head.

Diffuser

The air gap between flame tube and diffuser is adjusted by positioning the diffuser. This adjusts the mixing pressure and the air quantity required for combustion.

3 Product description

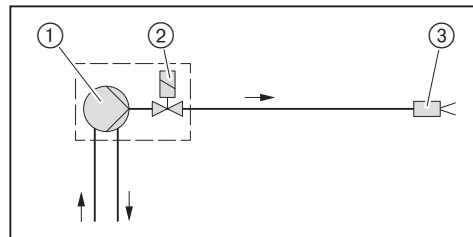
3.3.2 Oil supply

Oil pump

The pump draws the oil through the supply line and carries it under pressure to the oil nozzle. The pressure regulating valve keeps the oil pressure constant.

A solenoid valve opens and closes the oil supply to the nozzle. The pressure regulating valve and solenoid valve are integrated into the pump.

Sequence diagram



- ① Oil pump on burner
- ② Solenoid valve on the oil pump
- ③ Nozzle head with nozzle

3.3.3 Electrical components

Combustion Manager

The combustion manager W-FM is the control unit of the burner.
It controls the sequence of operation and monitors the flame.

Burner motor

The burner motor drives the fan wheel and the oil pump.

Ignition unit

The electronic ignition unit creates a spark at the electrode, which ignites the fuel/air mixture.

Flame sensor

The combustion manager monitors the flame signal via the flame sensor.
If the flame signal becomes too weak, the combustion manager carries out a controlled shutdown.

3 Product description

3.3.4 Program sequence

Pre-purge without actuator

At heat demand, the burner motor starts after the initialisation time (T_i) has elapsed.
The combustion chamber is pre-purged.

Pre-purge with actuator (optional)

At heat demand, the air damper actuator starts after the initialisation time (T_i) has elapsed.

If the actuator limit switch (S2) is closed, the burner motor starts.

The combustion chamber is pre-purged.

Ignition

Ignition starts with the pre-purge time (T_v).

Fuel release

Following the pre-purge time (T_v) the solenoid valve (K11) opens and releases the fuel.

Safety time

With fuel release, safety time (T_s) and post-ignition time (T_{Nz}) start.

The flame signal must be present within the safety time (T_s).

Operation

The combustion manager monitors the flame signal via the flame sensor.

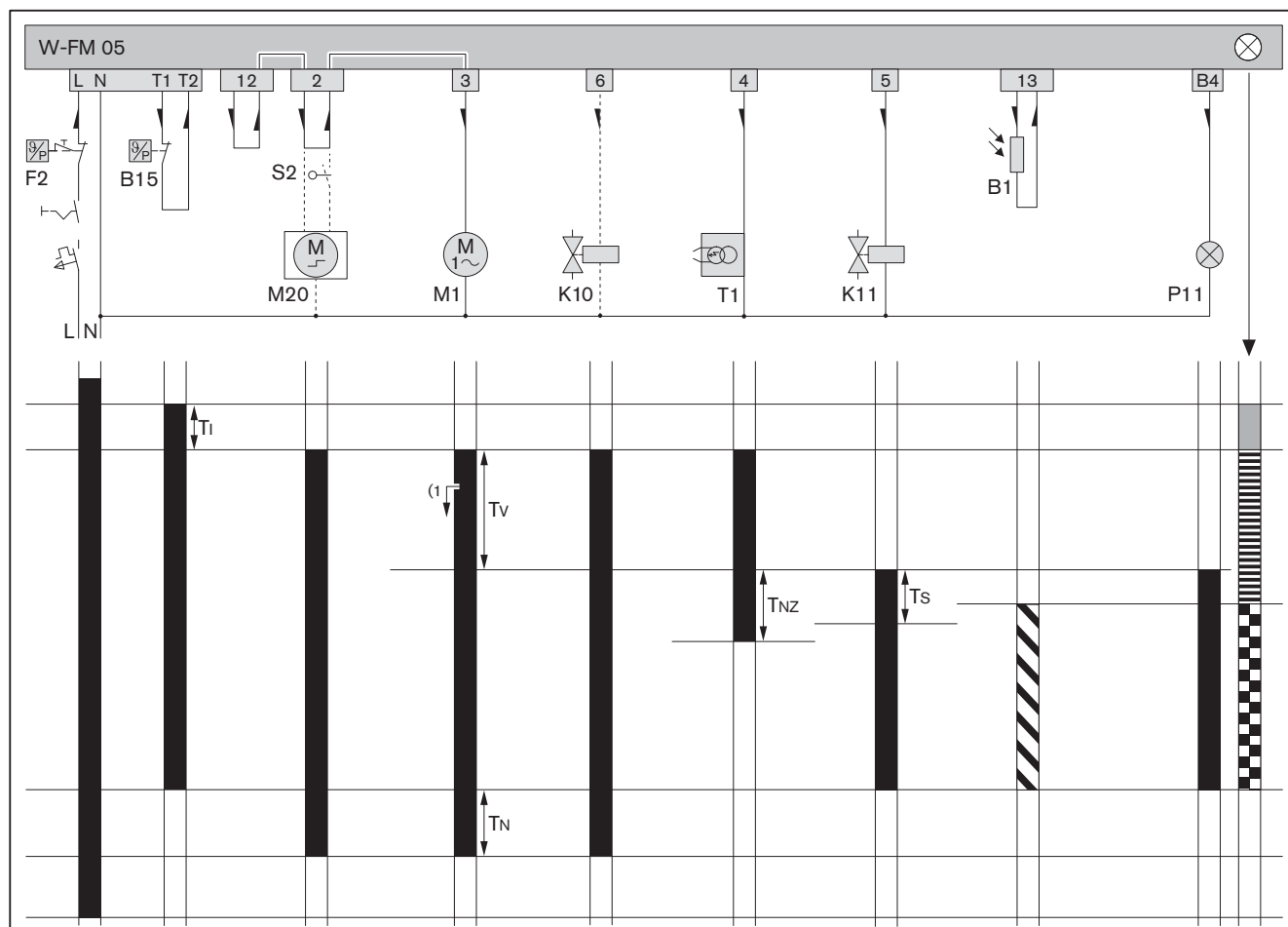
Post-purge

If there is no longer a heat demand, the solenoid valve (K11) closes and stops the fuel supply.

Post-purge time (T_N) begins.

Following the post-purge time (T_N) the burner motor switches off.

The actuator (optional) drives to Closed position.



- B1 Flame sensor
B15 Temperature or pressure regulator
F2 Temperature or pressure limiter
K10 Anti siphon valve (optional)
K11 Solenoid valve
M1 Burner motor
M20 Air damper actuator (optional)
P11 Control lamp operation (optional)
S2 Actuator limit switch (optional)
T1 Ignition unit
(¹) Actuator start delay (optional)

- T_l Initialisation time: 1 s
T_N Post-purge time: 1.2 s
T_{NZ} Post-ignition time: 6.5 s
T_s Safety time: 4.6 s
T_v Pre-purge time: 16.2 s
Voltage is applied
Flame signal present
Current path
START (orange)
Ignition phase (flashing orange)
Burner operation (green)

3 Product description

3.4 Technical data

3.4.1 Approval data

DIN CERTCO	5G936
Basic standards	EN 267:2020 Additional standards, see EU Declaration of Conformity.

3.4.2 Electrical data

Mains voltage / Mains frequency	230 V/50 Hz
Consumption at start	max 239 W
Consumption during operation	max 139 W
Power consumption	max 1.0 A
Internal unit fuse	T6.3H, IEC 127-2/5
External fuse	max 16 AB

3.4.3 Ambient conditions

Temperature in operation	–10 ⁽¹⁾ ... +40 °C
Temperature during transport/storage	–20 ... +70 °C
relative humidity	max 80 %, no dew point
Installation elevation	max 2000 m ⁽²⁾

⁽¹⁾ With the relevant suitable fuel oil and layout of oil supply.

⁽²⁾ Consultation with Weishaupt is required for higher installation elevation.

3.4.4 Permissible fuels

- Fuel oil EL to DIN 51603-1
- Fuel oil EL to ÖNORM-C1109 (Austria)
- Fuel oil EL to SN 181 160-2 (Switzerland)
- Green Fuels, see supplementary manual (Print No. 835910xx)

3.4.5 Emissions

Flue gas

In accordance with EN 267, the burner meets the requirements of emission class 3.

The NO_x values are influenced by:

- combustion chamber dimensions
- flue gas system
- fuel
- combustion air (temperature and humidity)
- medium temperature
- Excess air

Combustion chamber dimensions, see Weishaupt Partner Portal / Documents and Applications / Online Applications / NO_x calculation for burners.

Sound levels

Dyad noise emission values

Measured sound power level L _{WA} (re 1 pW)	66 dB(A) ⁽¹⁾
Uncertainty value K _{WA}	4 dB(A)
Measured sound pressure level L _{pA} (re 20 µPa)	59 dB(A) ⁽²⁾
Uncertainty value K _{pA}	4 dB(A)

⁽¹⁾ Determined to ISO 9614-2.

⁽²⁾ Determined at 1 metre distance from the front of the burner.

The measured noise levels plus uncertainty values form the upper limit value, which could occur when measuring.

3 Product description

3.4.6 Rating

Combustion heat rating

Combustion heat rating	25 ... 55 kW
	2.1 ... 4.6 kg/h ⁽¹⁾

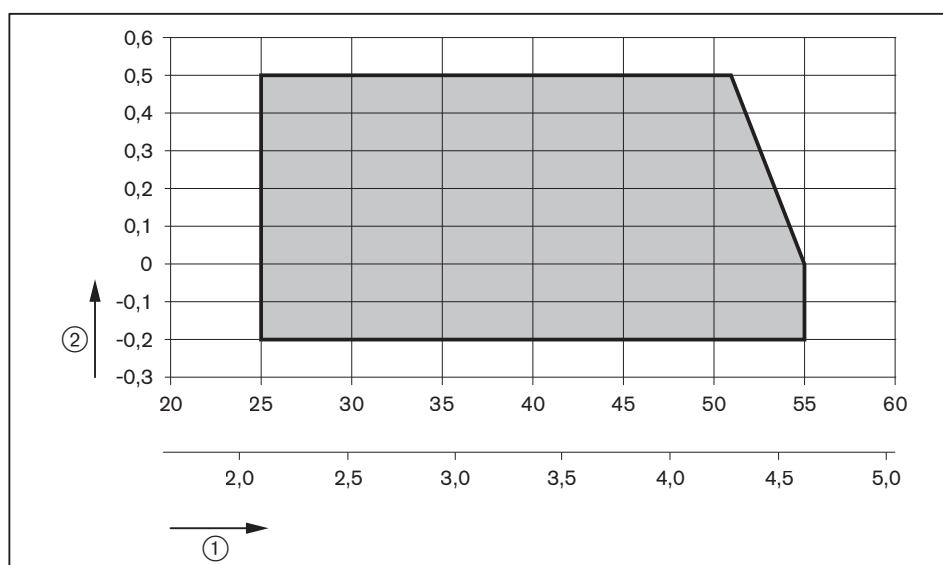
⁽¹⁾ The oil throughput data relates to a calorific value of 11.9 kWh/kg for fuel oil EL.

Capacity graph

Capacity graph to EN 267.

The capacity data given relates to an installation elevation of 500 m above sea level. For installation elevations above 500 m a capacity reduction of approx. 1 % per 100 m applies.

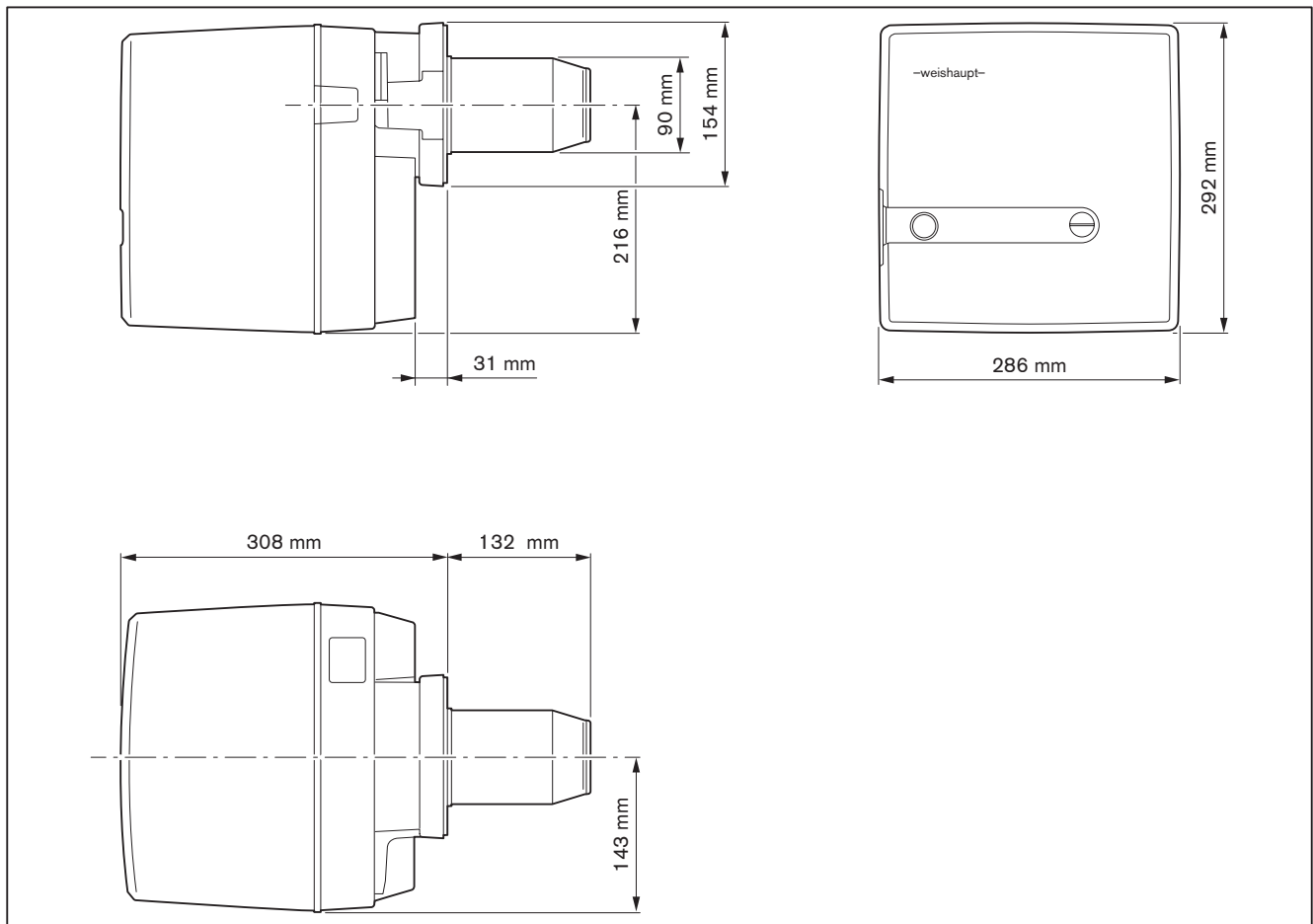
A limited capacity graph is valid for ducted air intake.



- ① Combustion heat rating [kW] or [kg/h]
- ② Combustion chamber pressure [mbar]

3.4.7 Dimensions

Burner



3.4.8 Weight

approx. 11 kg

4 Installation

4 Installation

4.1 Installation requirements

Burner type and capacity graph

Burner and heat exchanger must be matched.

- Check burner type and burner capacity.

Installation location

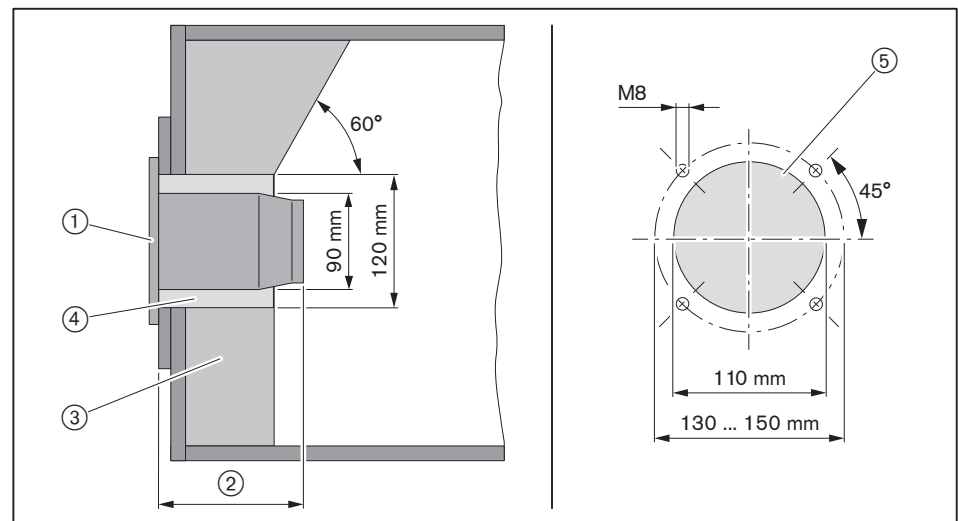
- Prior to installation ensure that:
 - sufficient space is available for normal and service position [ch. 3.4.7]
 - sufficient combustion air is available and, if necessary, a ducted air intake is installed

Prepare heat exchanger

The refractory 3 must not protrude beyond the front edge of the combustion head. The refractory can take a conical shape (min 60°).

Refractory may not be required on boilers with water-cooled front, unless the manufacturer gives other instructions.

Following installation, the aperture 4 between flame tube and refractory should be filled with flame-proof, resilient insulating material. Do not make solid.



- ① Flange gasket
- ② 132 mm
- ③ Refractory
- ④ Aperture
- ⑤ Boiler plate recess

4.2 Selecting a nozzle

- Determine nozzle size.

Recommended nozzles

For direct draught combustion chambers Weishaupt recommend 60° H nozzles for combustion heat ratings from 44 kW.

Make	Size	Characteristics
Fluidics	0.50 ... 0.85 gph	60°SF, HF
Steinen	0.50 ... 0.55 gph	60°ST, HT
Steinen	0.60 ... 1.25 gph	60°S, H

Pump pressure setting

10 ... 12 ... 14 bar

Spray characteristic and spray angle varies depending on pump pressure.

Nozzle selection table

Different load values are possible due to tolerances.

Burner capacity [kW] at pump pressure

Nozzle size [gph]	10 bar	11 bar	12 bar	13 bar	14 bar
0.50	–	–	24.9	25.8	26.2
0.55	24.9	26.0	27.1	28.2	29.3
0.60	27.0	28.3	29.6	30.9	32.0
0.65	29.8	30.9	32.1	33.3	34.5
0.75	33.3	35.7	36.9	38.1	40.5
0.85	38.1	40.5	41.7	44.0	45.2
1.00	45.2	47.6	49.5	51.2	53.6
1.10	49.5	52.4	54.7	57.1	58.3
1.25	55.9	–	–	–	–

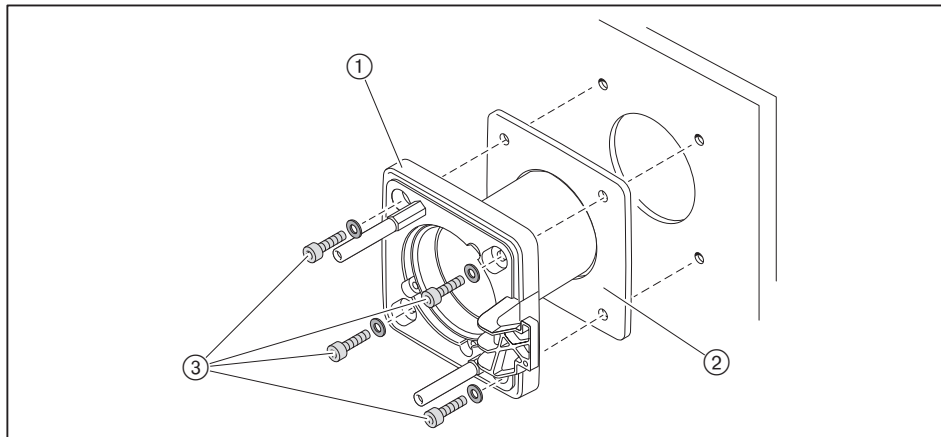
Conversion of burner capacity to oil throughput see formula below.

$\text{Oil throughput in kg/h} = \frac{\text{Burner capacity in kW}}{11.9 \text{ kWh/kg}}$
--

4 Installation

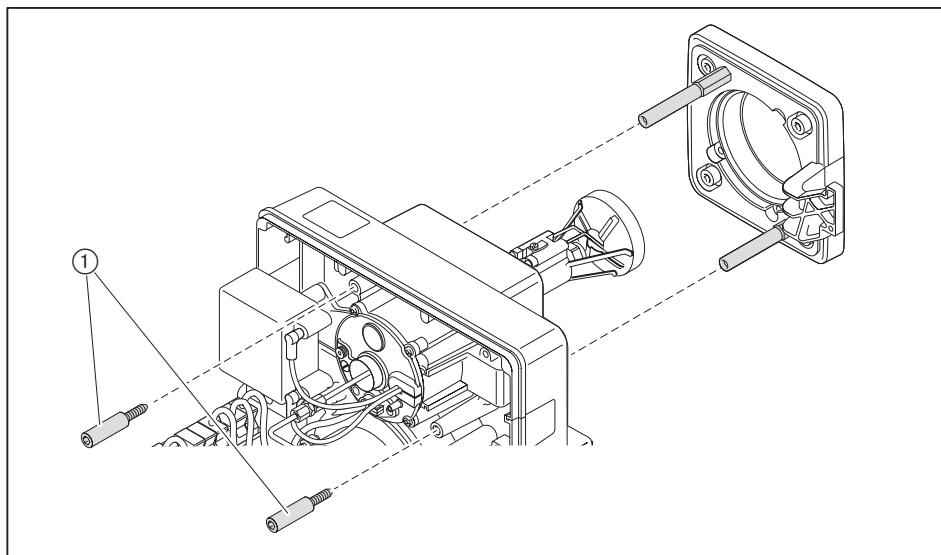
4.3 Burner installation

- ▶ Remove burner flange ① from burner housing.
- ▶ Fit flange gasket ② and burner flange ① to the heat exchanger using screws ③.
- ▶ The aperture between flame tube and refractory should be filled with flame-proof, resilient insulating material (do not make solid).



It is possible to install the burner rotated by 180° if space is limited. This requires conversion measures [ch. 4.3.1].

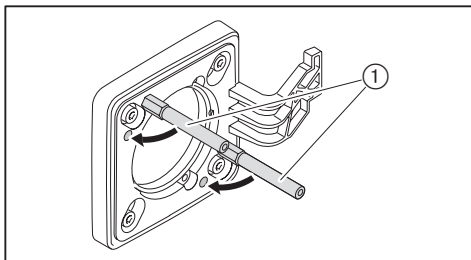
- ▶ Fit nozzle [ch. 9.4].
- ▶ Set ignition electrodes [ch. 9.5]
- ▶ Check nozzle distance and adjust if necessary [ch. 9.7].
- ▶ Mount burner with screws ① to burner flange.



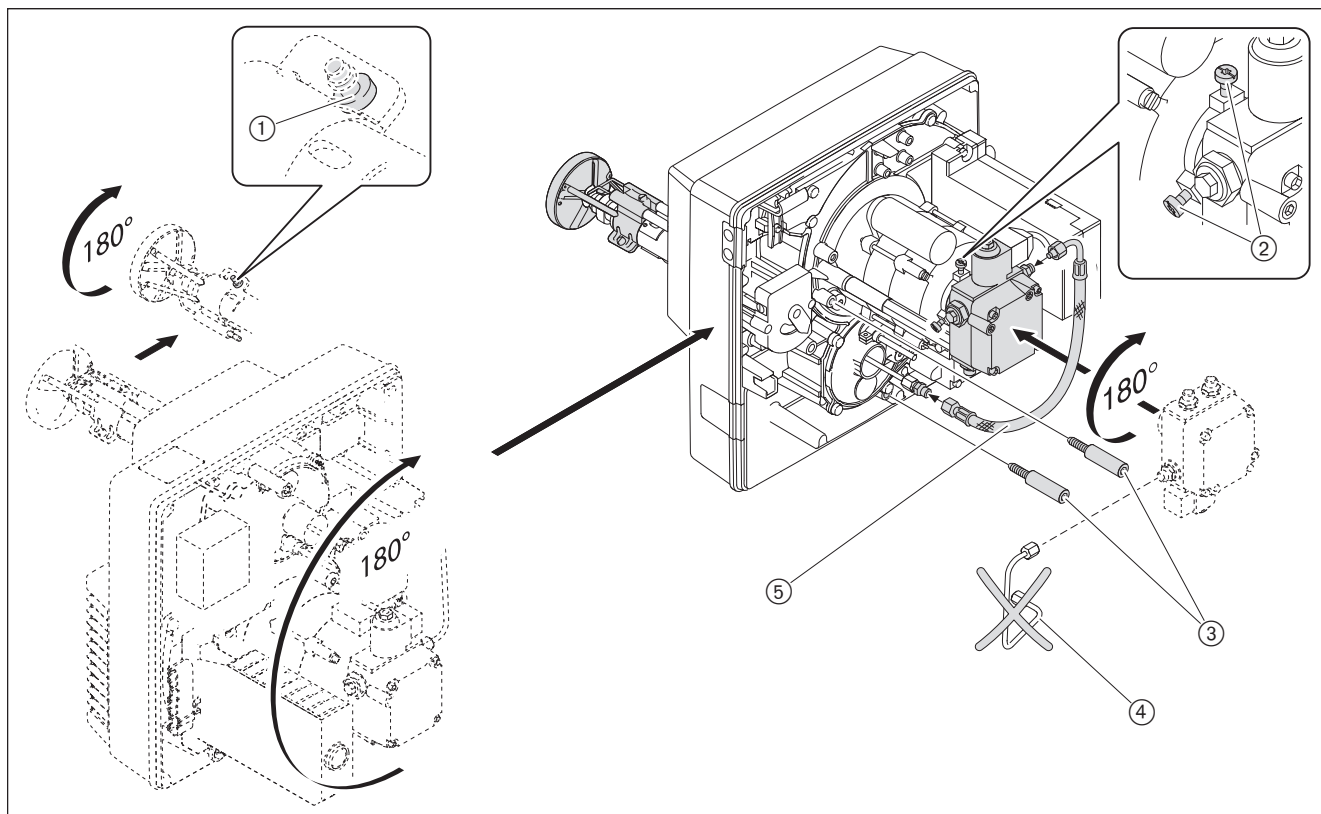
4.3.1 Rotate burner by 180° (optional)

A pressure hose (DN 4, 286 mm) for installation rotated by 180° is required.

- Place stay bolt ① into neighbouring threaded holes.



- Place burner into service position A [ch. 9.3].
- Undo screw ① on diffuser and turn diffuser by 180°.
- Fit nozzle [ch. 9.4].
- Set ignition electrodes [ch. 9.5]
- Check nozzle distance and adjust if necessary [ch. 9.7].
- Rotate burner by 180° and secure with screws ③.
- Remove oil line ④.
- Undo fixing screws ② for oil pump and rotate oil pump by 180°.
- Tighten screws ②.
- Fit pressure hose ⑤ supplied with conversion kit:
 - fit elbow end to pump,
 - fit straight end to nozzle assembly.



5 Installation

5.1 Oil supply

Observe EN 12514-2, DIN 4755, TRÖI and local regulations.

Check conditions for oil pump

Suction resistance	max 0.4 bar ⁽¹⁾
Flow pressure	max 2 bar ⁽¹⁾
Flow temperature	max 60 °C ⁽¹⁾

⁽¹⁾ Measured at the pump.

Check conditions for oil hoses

Length	1200 mm
Oil hose connection	G ³ / ₈
Nominal pressure	10 bar
Thermal load	max 100 °C

Connect oil supply



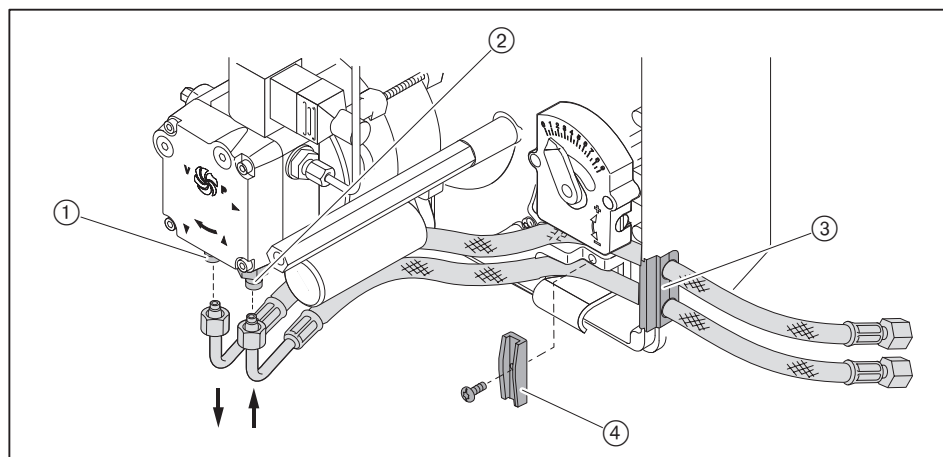
NOTICE

Damage to the oil pump due to incorrect connection

Mixing up supply and return can damage the oil pump.

- Ensure correct connection of oil hoses to the supply and return of the pump.

- Fit oil hoses with bracket (4) and grommet (3) to burner.



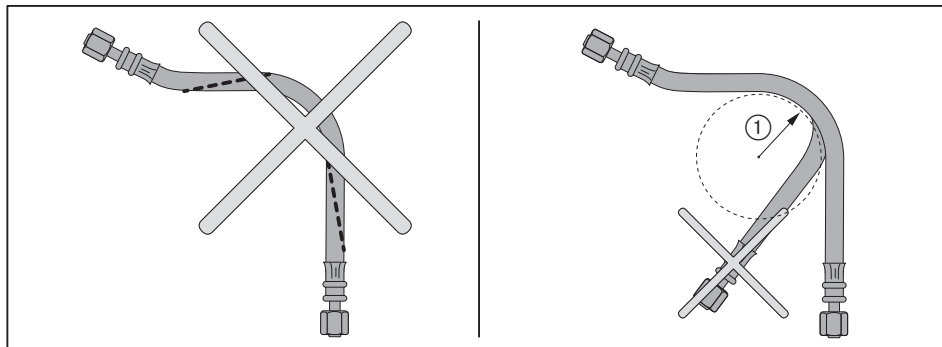
① Return

② Flow

- Connect oil supply and observe:
 - do not twist oil hoses
 - avoid mechanical tension
 - consider length of hose required for the service position
 - do not kink oil hoses (curve radius ① of 50 mm must be maintained)

If these conditions for connection can not be met:

- adapt oil supply on site.



Purge oil supply and ensure it is tight



NOTICE

Oil pump seized due to running dry

Pump could be damaged.

- Fill oil supply with oil and purge.

- Ensure oil supply is tight.

5 Installation

5.2 Electrical connection



Risk of electric shock

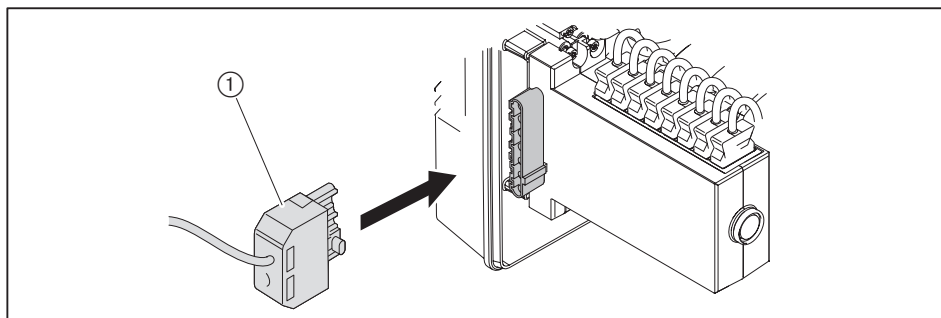
Working on the device when voltage is applied can lead to electric shock.

- ▶ Isolate the device from the power supply prior to starting any work.
- ▶ Safeguard against accidental restart.

The electrical connection must only be carried out by qualified electricians. Observe local regulations.

Observe wiring diagram [ch. 11.2].

- ▶ Check polarity and wiring of 7 pole connection plug ①.
- ▶ Plug in connection plug ①.



With remote reset, install connection line separately, do not exceed maximum cable length of 10 metres.

6 Operation

6.1 Operating panel

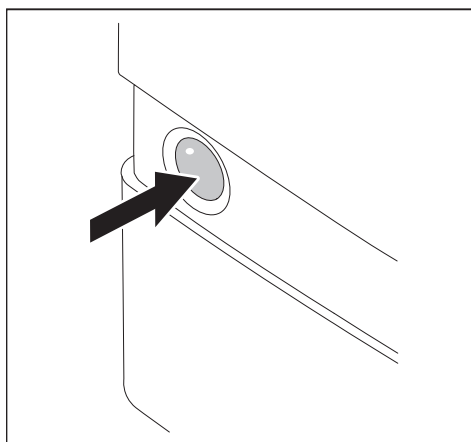
**NOTICE****Damage to the combustion manager due to incorrect operation**

Excessive pressure applied to the illuminated push button can damage the combustion manager.

- Only lightly press illuminated push button.

The illuminated push button on the combustion manager has the following functions:

- display operating condition [ch. 6.2],
- display fault codes [ch. 10.1.2],
- reset burner lockout [ch. 10.1.2].



Re-starting the burner during burner operation:

- Press illuminated push button for 1 second.

6.2 Display

Illuminated push button	Operating condition
orange	Start phase
Flashing orange	Ignition and pre-purge phase
Green	Operation
red	Fault [ch. 10]

Additional flashing signals can be read off as fault code [ch. 10].

7 Commissioning

7.1 Prerequisite

Commissioning must only be carried out by qualified personnel.

Only correctly carried out commissioning ensures the operational safety.



Do not operate the burner outside of the capacity graph [ch. 3.4.6].

- ▶ Prior to commissioning ensure that:
 - all assembly and installation work has been carried out correctly
 - sufficient combustion air is available and, if necessary, a ducted air intake is installed
 - the annulus between flame tube and heat exchanger is filled
 - the heat exchanger is filled with medium
 - the regulating, control and safety devices are functioning and set correctly
 - the flue gas ducts are unimpeded
 - a measuring point conforming to standards is available to measure the flue gas
 - the heat exchanger and flue gas ducting up to the test point are sound, as extraneous air influences the test results
 - the operating instructions of the heat exchanger are complied with
 - a heat demand is available

Additional system-related tests could be necessary. Please observe the operating guidelines for the individual components.

On installations with process equipment, the conditions for safe operation and commissioning must be met, see worksheet 8-1 (Print No. 831880xx).

7.1.1 Connect measuring devices

Pressure measuring device and ammeter

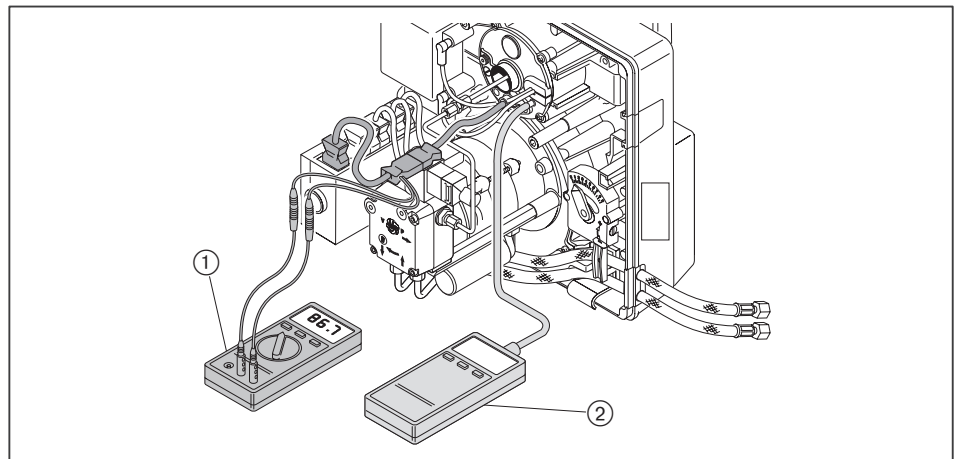
- Pressure measuring device for mixing pressure.
- Ammeter for flame signal.
- ▶ Connect pressure measuring device ②.

Test adapter No. 13 required (Order No. 240 050 12 052).

- ▶ Unplug plug No. 13.
- ▶ Plug in test adapter No. 13.
- ▶ Connect ammeter ①.

Flame signal QRB4

Extraneous light detection from	16 μ A
Minimum flame signal	35 μ A
Recommended flame signal	45 ... 72 μ A



Oil pressure measuring devices on oil pump

- Vacuum gauge for suction resistance/flow pressure.
- Pressure gauge for pump pressure.



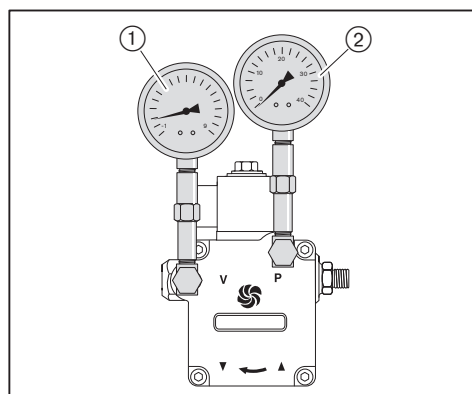
NOTICE

Oil leakage from oil pressure measuring devices due to constant load

Oil pressure measuring devices could be damaged and cause environmental pollution through leakage.

- ▶ Remove oil measuring devices once commissioning is complete.

- ▶ Close fuel shut off devices.
- ▶ Remove closing plug on the pump.
- ▶ Connect vacuum gauge ① and pressure gauge ②.



7.1.2 Setting values

Set mixing head relative to the combustion heat rating required. For this, the diffuser setting and the air damper setting should be matched.

Determine diffuser and air damper settings



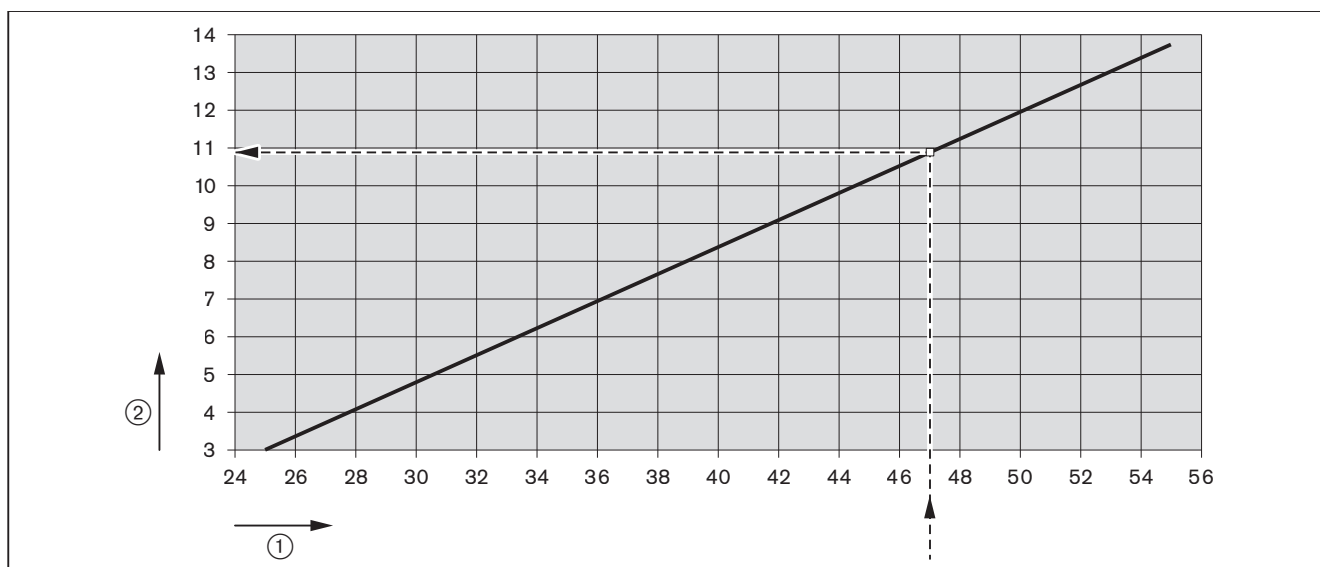
Do not operate the burner outside of the capacity graph [ch. 3.4.6].

- Determine the diffuser setting (dimension X) and air damper setting required from the diagram and note down.

Example

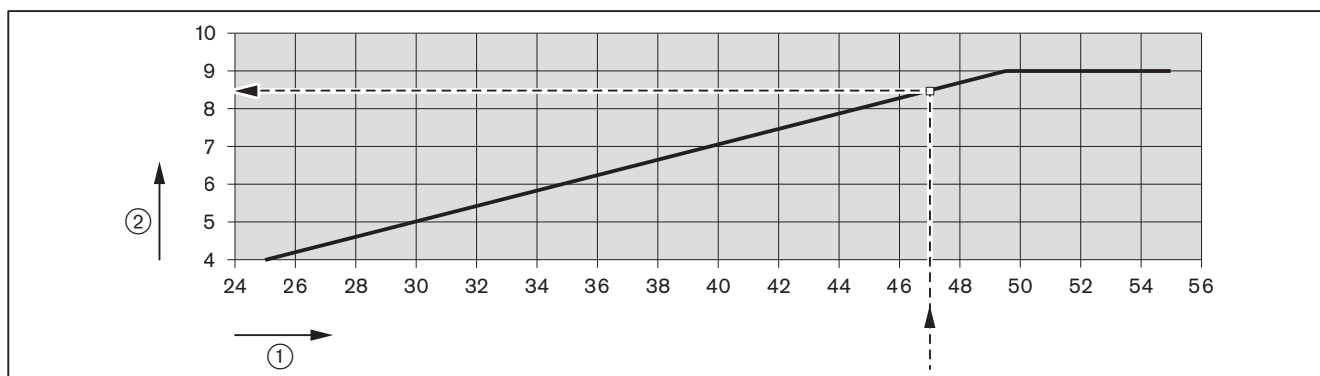
Burner capacity required	47 kW
Diffuser setting (dimension X)	10.9 mm
Air damper setting	8.5

Diffuser default settings



- ① Combustion heat rating [kW]
- ② Diffuser setting (dimension X) [mm]

Air damper default settings

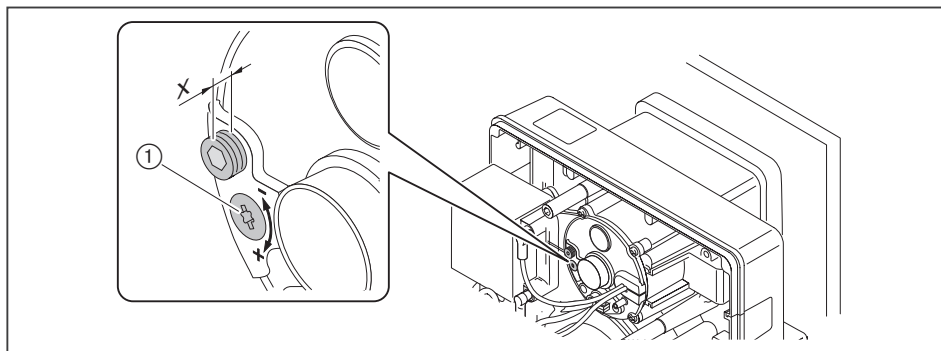


- ① Combustion heat rating [kW]
- ② Air damper setting

Set diffuser

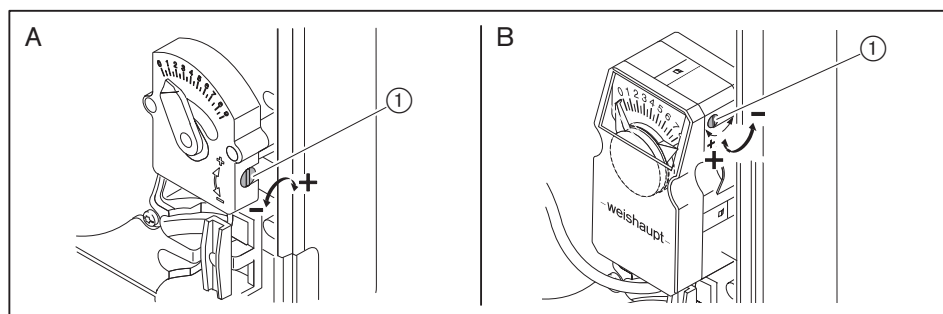
With dimension $X = 0$ mm the indicating bolt is flush with the cover of the nozzle assembly.

- Turn screw ①, until dimension X equals the value determined.



Set air damper

- Turn setting screw ① until the scale shows the value determined.

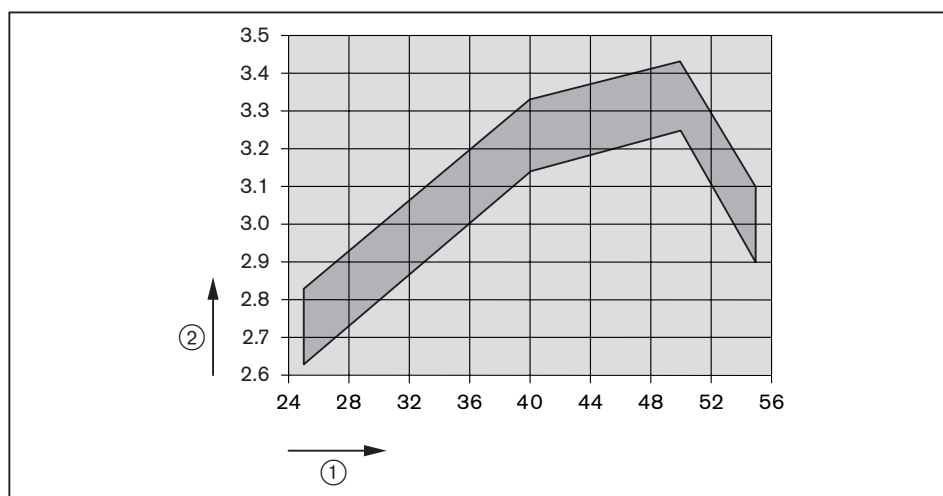


A Manual adjustment

B Actuator (optional)

Determine mixing pressure

- Determine the mixing pressure required for the pre-set combustion heat rating from the diagram and note down.



① Combustion heat rating [kW]

② Mixing pressure [mbar]

■ Guide values, which could vary depend. on comb. chamber resistance.

7.2 Adjusting the burner



Risk of electric shock

Touching the ignition device can lead to electric shock.

- ▶ Do not touch ignition device during the ignition process.

- ▶ During commissioning check:
 - flame signal [ch. 7.1.1],
 - suction resistance or flow pressure of oil pump [ch. 5.1],
 - mixing pressure [ch. 7.1.2].

1. Start the burner

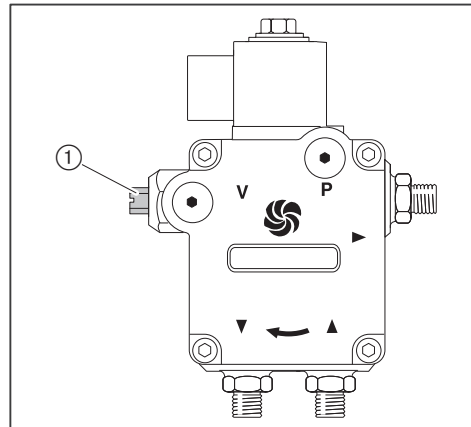
Heat demand from the boiler controller required.

- ▶ Open fuel shut off devices.
- ▶ Switch on voltage supply.
- ✓ Illuminated push button lights up red.
- ▶ Press illuminated push button for 1 second.
- ✓ Burner starts in accordance with the programme sequence [ch. 3.3.4].

2. Adjust combustion

The pump pressure must be set according to the nozzle selected [ch. 4.2].

- ▶ Check pump pressure at pressure gauge.
- ▶ Set pressure using pressure regulating screw ①:
 - increase pressure: clockwise rotation
 - decrease pressure: anticlockwise rotation



- ▶ Check combustion values.
- ▶ Determine combustion limit [ch. 7.4].
- ▶ Set excess air using air damper and diffuser setting, whilst observing mixing pressure determined [ch. 7.1.2].

7.3 Concluding work



NOTICE

Oil leakage from oil pressure measuring devices due to constant load

Oil pressure measuring devices could be damaged and cause environmental pollution through leakage.

- ▶ Remove oil measuring devices once commissioning is complete.

- ▶ Check control and safety devices.
- ▶ Check tightness of oil carrying components.
- ▶ Enter type and serial number into the text box [ch. 3.2].
- ▶ Enter combustion values and settings in the commissioning record and/or test sheet.
- ▶ Mount cover on burner.
- ▶ Inform the operator about the use of the equipment.
- ▶ Hand the installation and operating manual to the operator and inform him that this should be kept with the appliance.
- ▶ Point out to operator that the installation should be serviced annually.

7.4 Check combustion

Determine excess air

- ▶ Slowly close air damper(s) in the relevant operating point, until the combustion limit is reached (soot number approx. 1).
- ▶ Measure and document O₂ content.
- ▶ Read air number (λ).

Increase air number to ensure sufficient excess air:

- by 0.15 ... 0.20 (equates to 15 ... 20 % excess air)
- by more than 0.20 for more difficult conditions, such as:
 - dirty combustion air
 - fluctuating intake temperature
 - fluctuating chimney draught

Example

$$\lambda + 0.15 = \lambda^*$$

- ▶ Set air number (λ*), do not exceed CO content of 50 ppm.
- ▶ Measure and document O₂ content.

Check flue gas temperature

- ▶ Check flue gas temperature.
- ▶ Ensure that the flue gas temperature complies with the data provided by the boiler manufacturer.
- ▶ If necessary adjust flue gas temperature, e.g.:
 - Increase burner capacity to avoid condensation in the flue gas ducts, except on condensing units.
 - Reduce burner capacity to improve efficiency.
 - Adjust heat exchanger to the data provided by the manufacturer.

Determine flue gas losses

- ▶ Measure combustion air temperature (t_L) near the air damper(s).
- ▶ Measure oxygen content (O₂) and flue gas temperature (t_A) at the same time at one point.
- ▶ Determine flue gas losses using the following formula:

$$q_A = (t_A - t_L) \cdot \left(\frac{A_2}{21 - O_2} + B \right)$$

q_A Flue gas losses [%]

t_A Flue gas temperature [°C]

t_L Combustion air temperature [°C]

O₂ Volumetric content of oxygen in dry flue gas [%]

Fuel factors	Fuel oil
A ₂	0.68
B	0.007

8 Shutdown

In the event of operational failure:

- ▶ Switch off burner.
- ▶ Close fuel shut off devices.

9 Servicing

9.1 Notes on servicing



Risk of electric shock

Working on the device when voltage is applied can lead to electric shock.

- ▶ Isolate the device from the power supply prior to starting any work.
- ▶ Safeguard against accidental restart.



Risk of electric shock

Touching the ignition device can lead to electric shock.

- ▶ Do not touch ignition device during the ignition process.



Danger of getting burned on hot components

Hot components can lead to burns.

- ▶ Do not touch the components.
- ▶ Allow components to cool.



Risk of injury from sharp edges

Sharp edges on components can cause injury.

- ▶ Wear protective gloves.
- ▶ Watch out for sharp edges.



Damage caused by objects in the burner housing

It is possible for objects to fall into the burner housing.

If these objects are not removed, they could damage the burner.

- ▶ Following servicing, ensure that there are no objects left in the burner housing.

Servicing must only be carried out by qualified personnel. The combustion plant should be serviced annually. Depending on site conditions more frequent checks may be required.

Components, which show increased wear and tear or whose design lifespan is or will be exceeded prior to the next service should be replaced as a precaution.

The design lifespan of the components is listed in the service plan [ch. 9.2].



Weishaupt recommends a service contract is entered into to ensure regular inspections.

The following components must only be replaced and must not be repaired:

- Combustion Manager
- Flame sensor
- Actuator
- Oil solenoid valve
- Pressure switch
- Oil nozzle

Prior to every servicing

- ▶ Inform the operator about the extent of service work to be carried out.
- ▶ Switch off mains switch of installation and safeguard against accidental reactivation.
- ▶ Close fuel shut off devices.
- ▶ Remove cover.
- ▶ Unplug boiler control connection plug from combustion manager.

Following servicing

- ▶ Check tightness of oil carrying components.
- ▶ Check function of:
 - Ignition
 - Flame monitoring
 - oil pump (pump pressure and suction resistance)
 - Control and safety devices
- ▶ Check combustion values, if necessary re-adjust the burner.
- ▶ Enter combustion values and settings in the commissioning record.
- ▶ Refit cover.

9 Servicing

9.2 Service plan

Components	Criteria / design lifespan ⁽¹⁾	Service procedure
Oil nozzle	Soiling / wear	► Replace [ch. 9.4] Recommendation: at least every 2 years
Ignition electrode	Soiling	► Clean
	Damage / wear	► Replace Recommendation: at least every 2 years
Ignition cable	Damage	► Replace
Flame tube / diffuser	Soiling	► Clean
	Damage	► Replace
Oil hose	Damage / oil escaping	► Replace [ch. 9.9] Recommendation: every 5 years
Oil solenoid valve	Soundness 250 000 burner starts or 10 years ⁽²⁾	► Replace oil pump [ch. 9.9]
Oil pump filter	Soiling	► Clean [ch. 9.12]
Fan wheel	Soiling	► Clean
	Damage	► Replace [ch. 9.10]
Air duct	Soiling	► Clean
Air damper	Soiling	► Clean
Combustion Manager	250 000 burner starts or 10 years ⁽²⁾	► Replace
Flame sensor	Soiling	► Clean
	Damage 250 000 burner starts or 10 years ⁽²⁾	► Replace

⁽¹⁾ The specified design lifespan applies for typical use in heating, hot water and steam systems as well as for thermal process systems to EN 746.

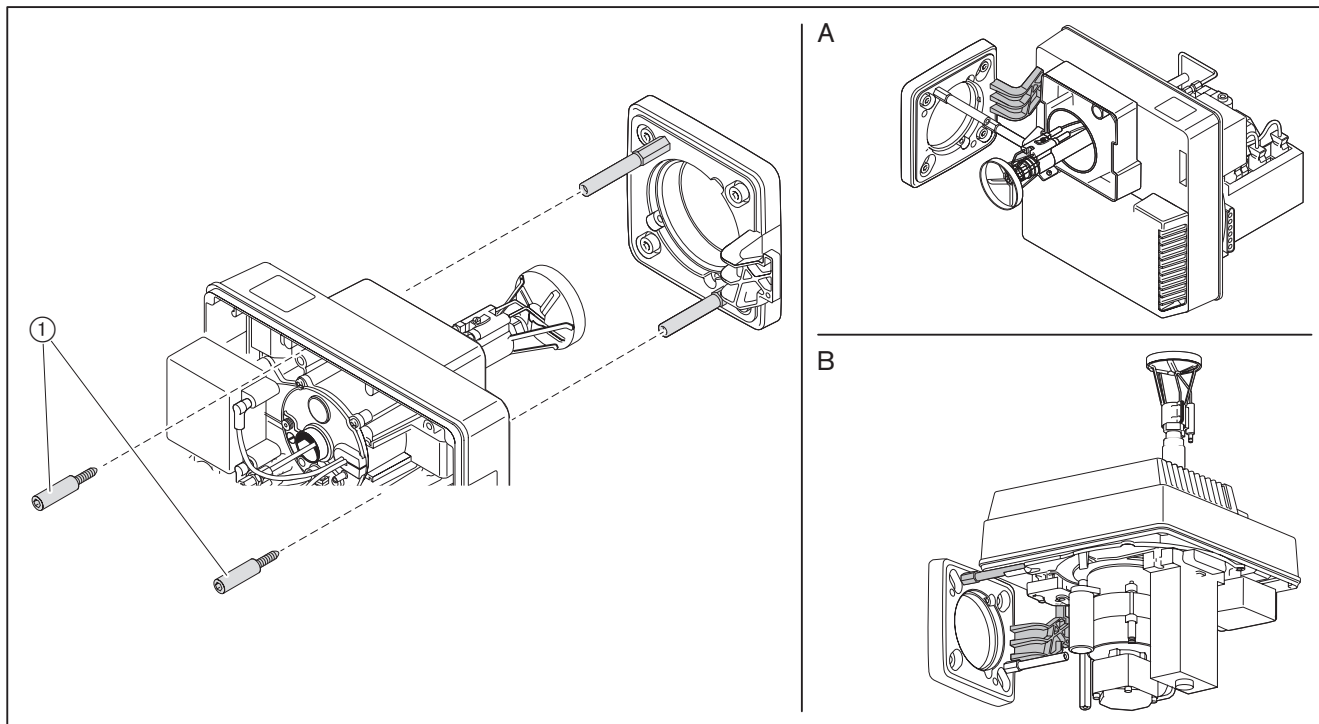
⁽²⁾ If a criterion is reached, carry out maintenance measures.

9.3 Service position

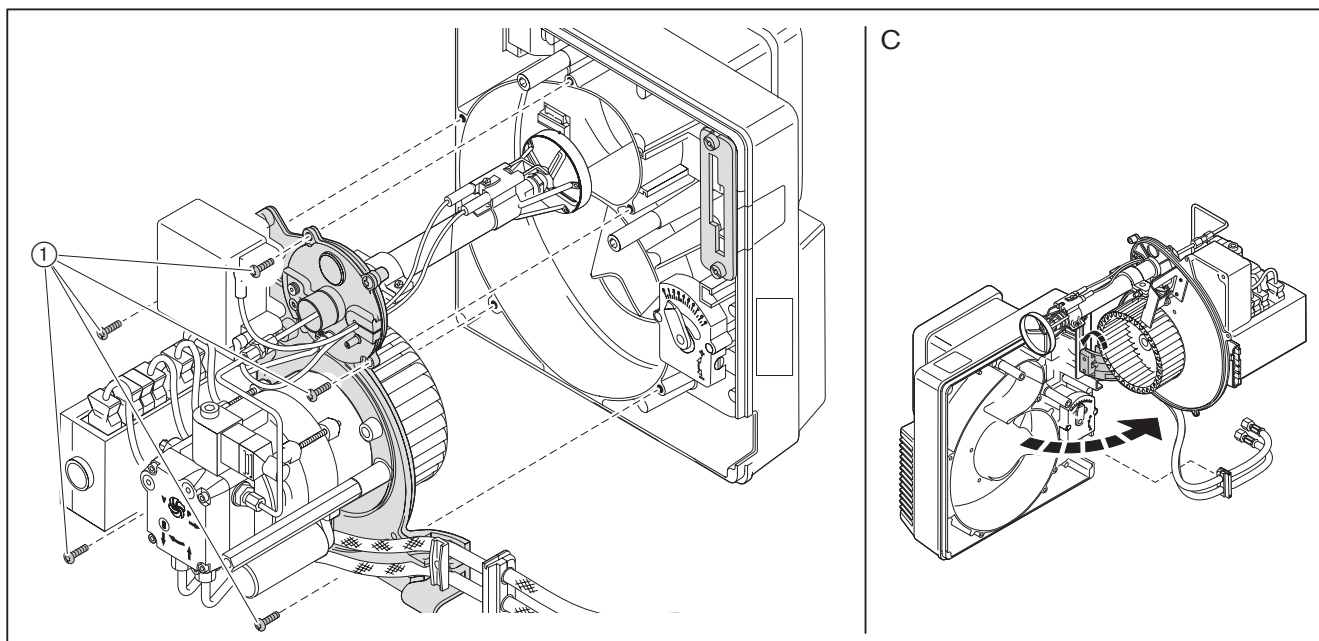
Observe notes on servicing [ch. 9.1].

- ▶ Remove bolts ①.
- ▶ If necessary remove oil hoses.
- ▶ Place burner into service position required.

Service position A and B



Service position C



9 Servicing

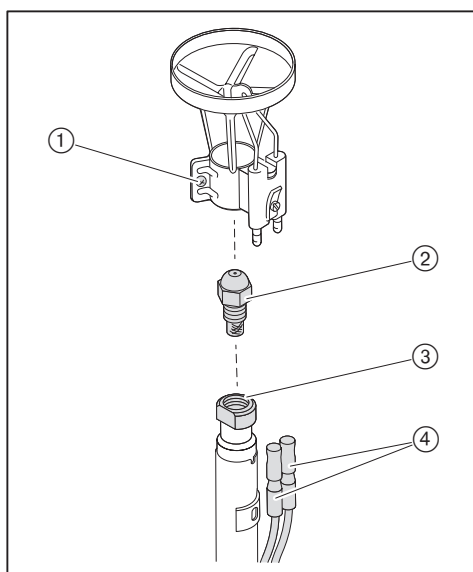
9.4 Replace nozzle

Observe notes on servicing [ch. 9.1].



Do not clean nozzles, always fit new nozzles.

- ▶ Place burner into service position B [ch. 9.3].
- ▶ Unplug ignition cable ④.
- ▶ Undo screw ① and remove diffuser.
- ▶ Counter-hold on the nozzle body ③ using a spanner and remove nozzle ②.
- ▶ Fit new nozzle ensuring it is seated tightly.
- ▶ Refit diffuser in reverse order.
- ▶ Set nozzle distance [ch. 9.7]
- ▶ Set ignition electrodes [ch. 9.5]

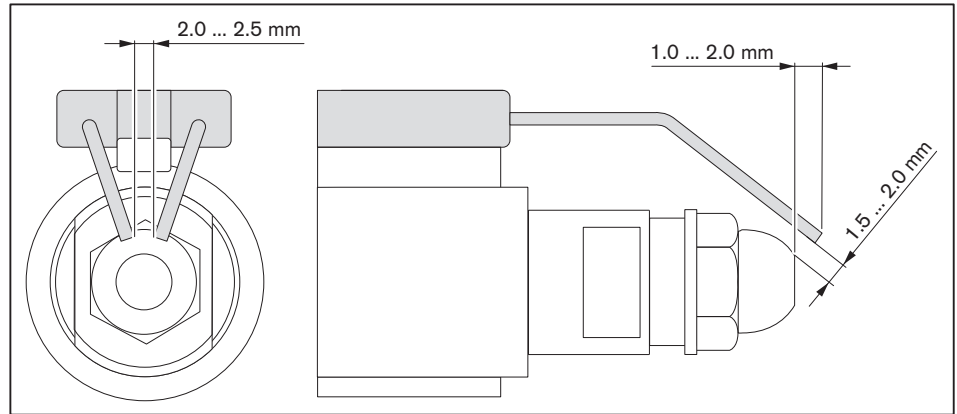


9.5 Set ignition electrodes

Observe notes on servicing [ch. 9.1].

The ignition electrodes must not touch the nozzle's atomising spray cone.

- ▶ Place burner into service position A [ch. 9.3].
- ▶ Check distance of ignition electrodes.
- ▶ If necessary adjust ignition electrodes by slightly bending.

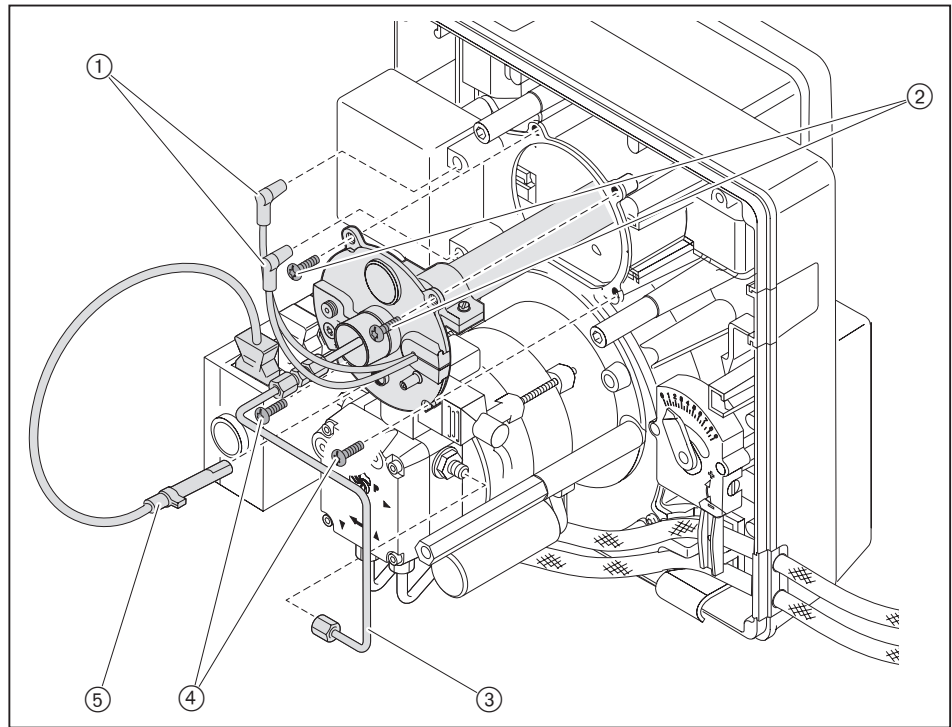


9 Servicing

9.6 Remove mixing head

Observe notes on servicing [ch. 9.1].

- ▶ Unplug ignition cable ①.
- ▶ Remove flame sensor ⑤.
- ▶ Remove oil line ③.
- ▶ Remove screws ②
- ▶ Undo screws ④.
- ▶ Remove mixing head.



9.7 Set mixing head

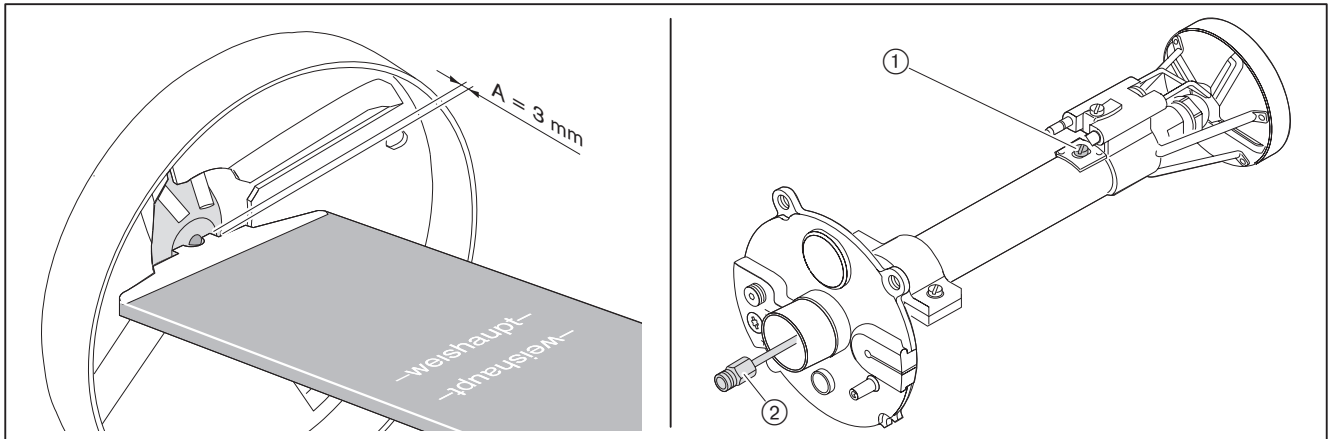
Observe notes on servicing [ch. 9.1].

Set nozzle distance

- ▶ Place burner into service position A [ch. 9.3].
- ▶ Insert setting gauge and check dimension A (3 mm).

If the value measured deviates from dimension A:

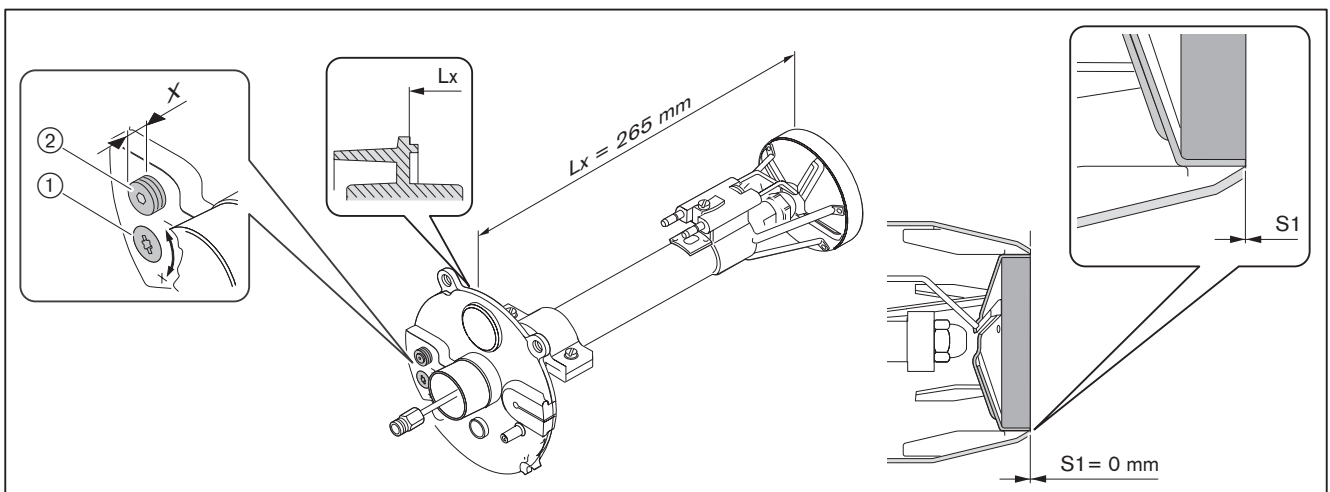
- ▶ Undo screw ①.
- ▶ Adjust nozzle body ② until dimension A is reached.
- ▶ Tighten screw ①.



Check basic setting

Dimension S1 can only be checked when the burner is mounted to a boiler door, which is hinged open.

- ▶ Hinge open boiler door or if necessary remove mixing head [ch. 9.6].
- ▶ Turn setting screw ① until the indicating bolt ② is flush with the nozzle assembly cover (dimension X = 0 mm).
- ▶ Check dimension S1 and/or dimension Lx.
- ▶ Set dimension S1 and/or dimension Lx by turning setting ①.
- ▶ Remove plug from indicating bolt ②.
- ▶ Turn indicating bolt until it is flush with the nozzle assembly cover (dimension X = 0 mm).
- ▶ Replace plug.

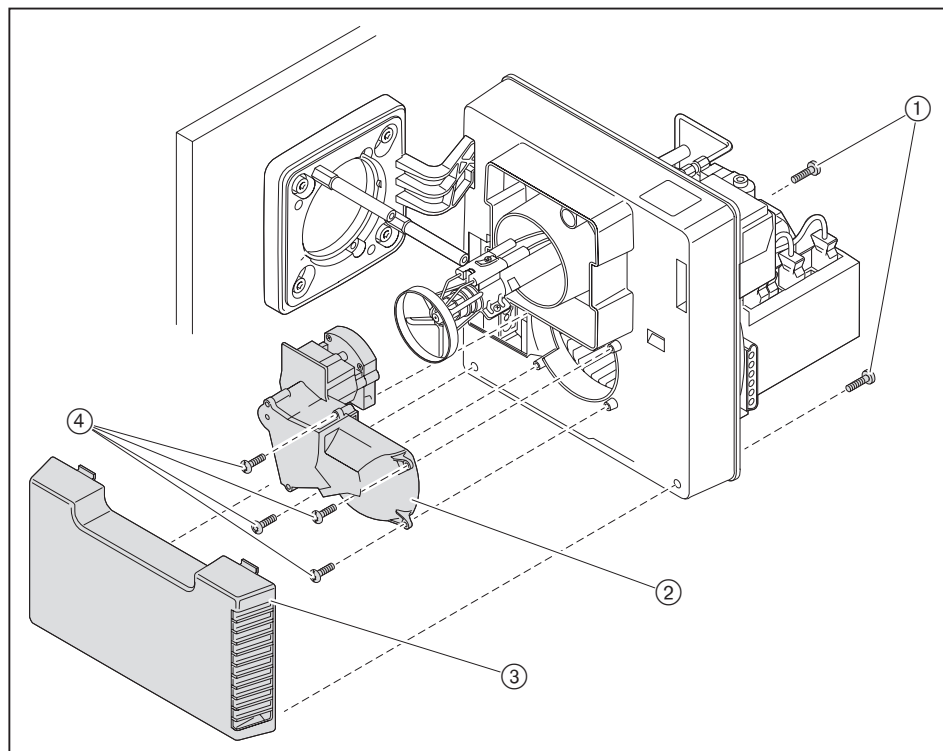


9 Servicing

9.8 Removing the air regulator

Observe notes on servicing [ch. 9.1].

- ▶ If necessary unplug actuator plug.
- ▶ Place burner into service position A [ch. 9.3].
- ▶ Remove bolts ①.
- ▶ Remove intake housing ③.
- ▶ Remove bolts ④.
- ▶ Remove air regulator ②.



9.9 Removing and refitting oil pump

Observe notes on servicing [ch. 9.1].

Removing

- ▶ Close fuel shut off devices.
- ▶ Unplug plug ①.
- ▶ Remove oil hoses ⑤.
- ▶ Remove oil line ④.
- ▶ Undo screws ② and remove oil pump.

Refitting

- ▶ Install oil pump in reverse order and:
 - ensure correct alignment of coupling ③,
 - ensure correct allocation of flow and return of the oil hoses.

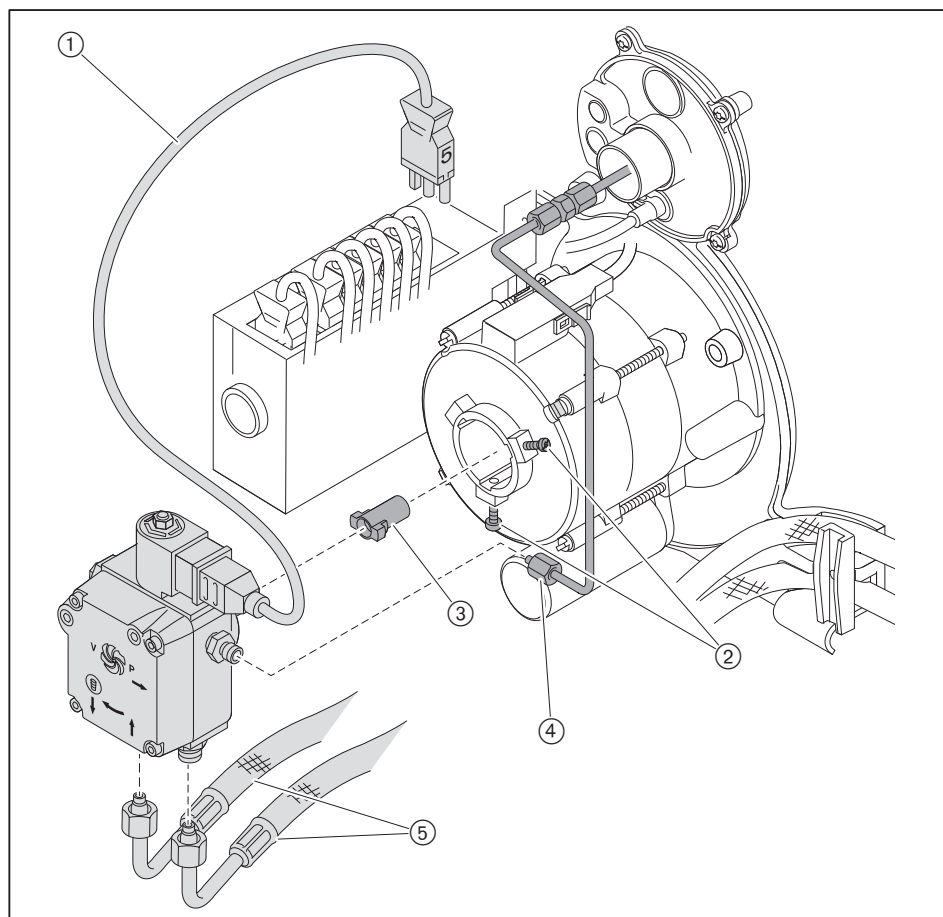


NOTICE

Damage to the oil pump due to incorrect connection

Mixing up supply and return can damage the oil pump.

- ▶ Ensure correct connection of oil hoses to the supply and return of the pump.



9 Servicing

9.10 Removing and refitting fan wheel

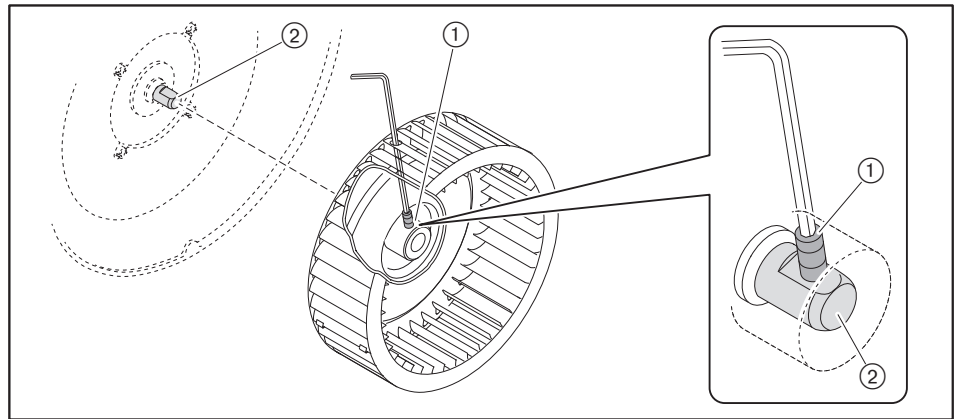
Observe notes on servicing [ch. 9.1].

Removing

- ▶ Place housing cover into service position C [ch. 9.3].
- ▶ Remove grub screw ① and remove fan wheel.

Refitting

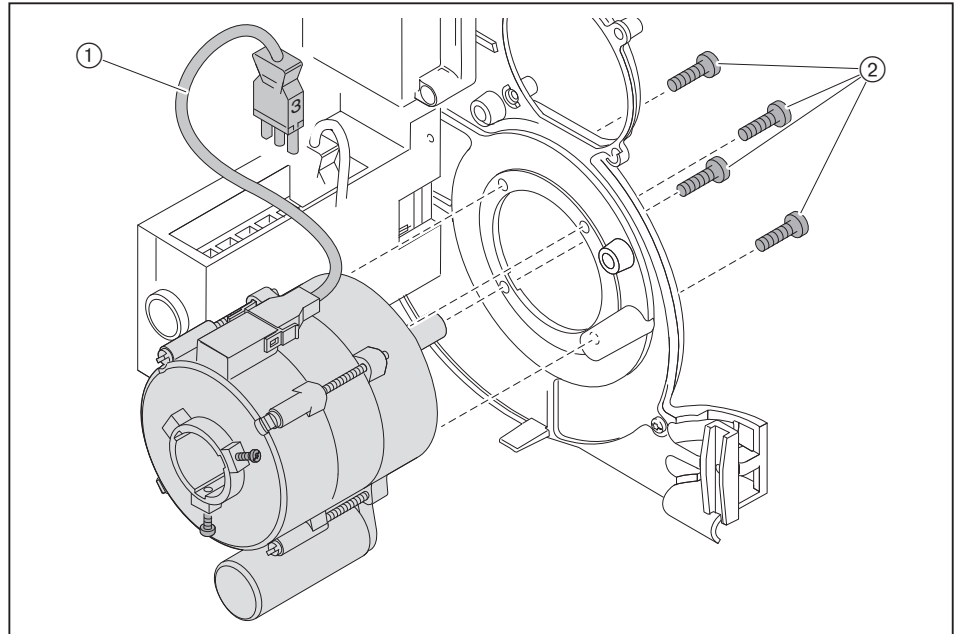
- ▶ Refit fan wheel in reverse order and
 - ensure correct alignment on the motor shaft ②
 - screw in new grub screw ①
 - turn fan wheel to ensure it moves freely



9.11 Remove burner motor

Observe notes on servicing [ch. 9.1].

- ▶ Remove the oil pump [ch. 9.9].
- ▶ Remove fan wheel [ch. 9.10].
- ▶ Unplug plug ①.
- ▶ Hold motor and remove screws ②.
- ▶ Remove motor.



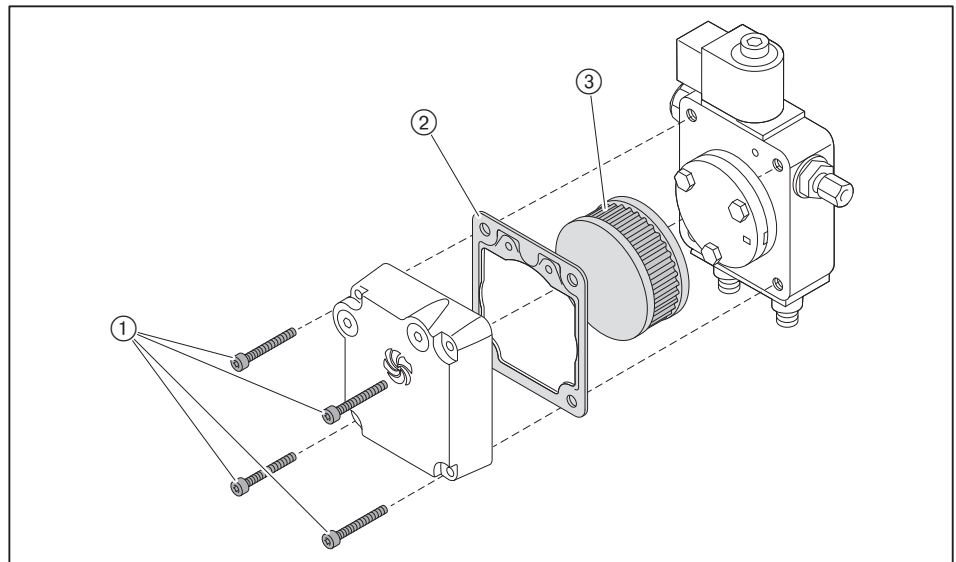
9 Servicing

9.12 Removing and refitting oil pump filter

Observe notes on servicing [ch. 9.1].

Removing

- ▶ Close fuel shut off devices.
- ▶ Remove bolts ①.
- ▶ Remove pump cover.
- ▶ Replace filter ③ and gaskets ②.



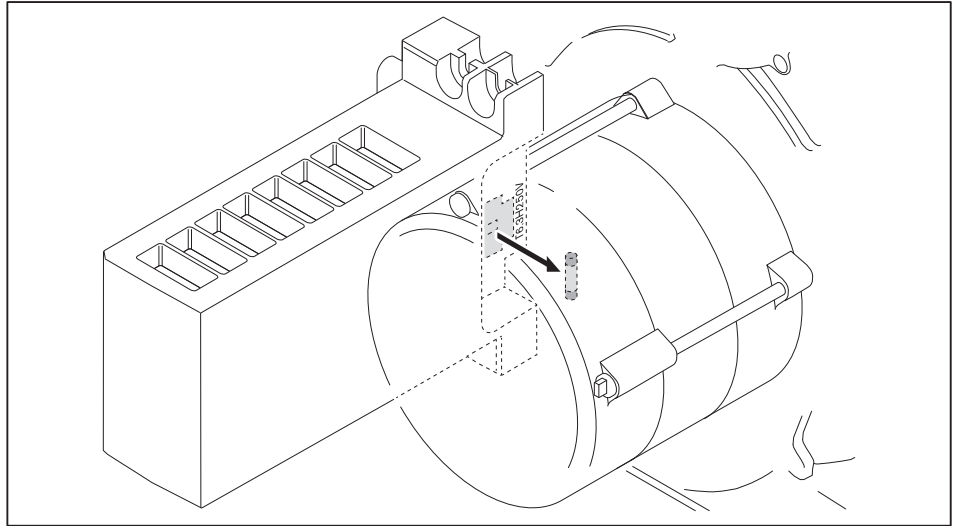
Refitting

- ▶ Refit filter in reverse order ensuring sealing surfaces are clean.

9.13 Replacing the fuse

Observe notes on servicing [ch. 9.1].

- ▶ Remove all plugs from the combustion manager.
- ▶ Remove screws from the combustion manager.
- ▶ Remove combustion manager.
- ▶ Replace fuse (T6.3H, IEC 127-2/5).



10 Troubleshooting

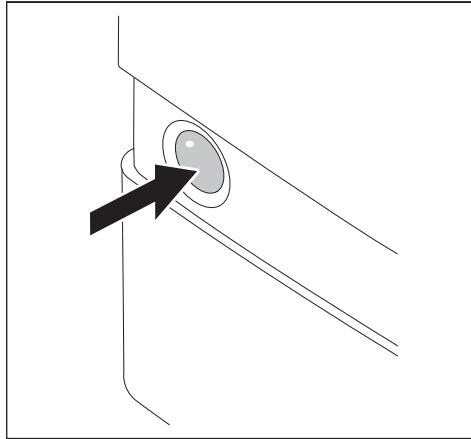
10 Troubleshooting

10.1 Procedures for fault conditions

The combustion manager recognises irregularities of the burner and indicates these with the illuminated push button.

The following conditions can occur:

- illuminated push button off [ch. 10.1.1],
- illuminated push button red [ch. 10.1.2],
- illuminated push button flashes [ch. 10.1.3].



10.1.1 Illuminated push button off

The following faults may be corrected by the operator:

Fault	Cause	Rectification
Burner not operating	External fuse has tripped ⁽¹⁾	► Check fuse.
	Heating switch is set to Off	► Switch on heating switch.
	Temperature limiter or pressure limiter on heat exchanger has triggered ⁽¹⁾	► Reset temperature limiter or pressure limiter on heat exchanger.
	Low water safety interlock on heat exchanger has triggered ⁽¹⁾	► Top up water. ► Reset low water safety interlock on heat exchanger.
	Temperature regulator or pressure regulator on heat exchanger has been set incorrectly	► Adjust temperature regulator or pressure regulator on heat exchanger.
	Boiler or heating circuit control is not functioning or has not been set correctly	► Check function and setting of boiler or heating circuit control.

⁽¹⁾ Notify your heating contractor or Weishaupt Customer Service if the problem occurs repeatedly.

10 Troubleshooting

10.1.2 Illuminated push button red

A burner fault has occurred. The burner is in lockout. Prior to resetting, the error code can be called up and used to control the cause of the fault.

Read error codes

Only 5 seconds after a fault occurred can it be analysed and read.

- ▶ Press illuminated push button for 5 seconds.
- ✓ Illuminated push button briefly lights up orange.
- ✓ Illuminated push button flashes red.
- ▶ Count the flashing signals between the flashing pauses and note down.
- ▶ Rectify cause of fault, see table.

Reset



NOTICE

Damage resulting from incorrect fault repair

Incorrect fault repair can cause damage to the equipment and injure personnel.

- ▶ Do not carry out more than 2 lockout resets successively.
- ▶ Faults must be rectified by qualified personnel.

- ▶ Press illuminated push button for 1 second.
- ✓ Red signal extinguishes.
- ✓ Burner has been reset.

Error codes with lockout

Faults must only be rectified by qualified personnel:

Fault codes	Fault	Cause	Rectification
Flashing 2 times No flame, end of safety time	Oil pump supplies no oil	Oil supply leaking	► Check oil supply
		Anti siphon valve does not open	► Check valve, if necessary replace
		Shut off device closed	► Open shut off device
		Pre-filter strainer soiled	► Replace pre-filter strainer
		Oil pump defective	► Replace oil pump [ch. 9.9]
	No oil throughput at the nozzle	Oil nozzle blocked	► Replace nozzle
	No ignition	Ignition electrode dirty or wet	► Clean ignition electrode
		Ignition electrode spark gap too big or short circuited	► Set ignition electrode [ch. 9.5]
		Ceramic insulator defective	► Replace ignition electrodes
		Ignition cable defective	► Replace ignition cable
		Ignition unit defective	► Replace ignition unit
	Solenoid valve does not open	Coil defective	► Replace coil
	Combustion manager does not detect a flame signal	Flame sensor soiled	► Clean flame sensor
		Flame sensor defective	► Replace flame sensor
		Illumination insufficient	► Check burner setting
	Burner motor does not run	Oil pump seized	► Replace oil pump [ch. 9.9]
		Capacitor defective	► Replace capacitor
		Burner motor defective	► Replace burner motor [ch. 9.11]
Flashing 4 times Flame simulation/ extraneous light	No flame formation despite ignition and oil supply	Nozzle distance incorrect	► Check nozzle distance, adjust if necessary [ch. 9.7]
		Mixing pressure too high	► Check mixing pressure [ch. 7.1.2]
	Flame signal prior to or after operation	Extraneous light source present	Extraneous light detection from 13 µA ► Find and eliminate extraneous light source
		Flame sensor defective	► Check flame sensor, if necessary replace
	Flame formation during pre-purge	Solenoid valve leaking	► Replace oil pump [ch. 9.9]

10 Troubleshooting

Faults must only be rectified by qualified personnel:

Fault codes	Fault	Cause	Rectification
Flashing 7 times Flame failure during operation	Flame has failed	Oil supply leaking	► Check oil supply
		Suction resistance in front of pump too high	
		Oil nozzle soiled	
	Flame signal insufficient	Burner setting incorrect	► Check burner setting ► Check flame signal [ch. 7.1.1]
		Flame sensor soiled	
		Flame sensor defective	
Flashing 8 times Release contact fault	Actuator limit switch does not close	Actuator defective	► Check actuator, replace if necessary
	Contact X3:2 not closed	Bridging plug No. 2 is missing	► Plug in bridging plug No. 2
	Contact X3:12 not closed	Bridging plug No. 12 is missing	► Plug in bridging plug No. 12
Flashing 10 times Combustion manager fault	Burner does not start	Parameters have been changed	► Reset burner [ch. 10.1.2]
		Combustion manager defective	► Reset burner [ch. 10.1.2], if fault reoccurs replace combustion manager

10.1.3 Illuminated push button flashes

An irregularity is present. The burner does not go to lockout. Once the fault has been rectified, the error code ceases.

Error codes without lockout

Faults must only be rectified by qualified personnel:

Fault codes	Cause	Rectification
flashing green/red	Extraneous light prior to heat demand	► Find and eliminate extraneous light source
Flashing red/orange with pause	Excess voltage	► Check voltage supply
Flashing orange/red	Low voltage	► Check voltage supply
	Internal unit fuse (F7) faulty	► Replace fuse [ch. 9.13]
	Combustion manager fault	► Replace combustion manager
Flashing green	Flame sensor soiled	► Clean flame sensor
	Flame sensor defective	► Replace flame sensor
	Burner operation with weak flame signal (< 45 µA)	► Adjust burner whilst observing the recommended flame signal [ch. 7.1.1]
Glimmering red	OCI mode activated (not used)	► Press illuminated push button for more than 5 seconds ✓ Combustion manager changes to operating mode

10 Troubleshooting

10.2 Operating problems

Faults must only be rectified by qualified personnel:

Observation	Cause	Rectification
Poor start behaviour of burner	Mixing pressure too high	► Correct mixing pressure
	Ignition electrodes set incorrectly	► Set ignition electrodes [ch. 9.5]
	Mixing head set incorrectly	► Set mixing head [ch. 9.7]
Oil pump makes severe mechanical noise	Oil pump sucks air	► Ensure oil supply is tight
	Suction resistance in oil line too high	► Clean filter ► Check oil supply
Oil nozzle atomisation uneven	Nozzle blocked/soiled	► Replace nozzle
	Nozzle worn	
Flame tube/diffuser has heavy soot deposit	Oil nozzle defective	► Replace nozzle
	Mixing head set incorrectly	► Set mixing head [ch. 9.7]
	Incorrect combustion air quantity	► Adjust burner
	Boiler room ventilated insufficient	► Ensure sufficient boiler room ventilation
	Wrong oil nozzle	► Check nozzle type
	Nozzle distance incorrect	► Check nozzle distance, adjust if necessary [ch. 9.7]
Combustion pulsating and/or burner booming	Mixing head set incorrectly	► Set mixing head [ch. 9.7]
	Incorrect combustion air quantity	► Adjust burner
	Wrong oil nozzle	► Check nozzle type
CO content too high	Nozzle distance too big	► Check nozzle distance, adjust if necessary [ch. 9.7]
Stability problems	Nozzle distance incorrect	► Check nozzle distance, adjust if necessary [ch. 9.7]
	Wrong oil nozzle	► Check nozzle type
Restart after flame failure	Burner repeats start process	► See error codes flashing 7 times

11 Technical documentation

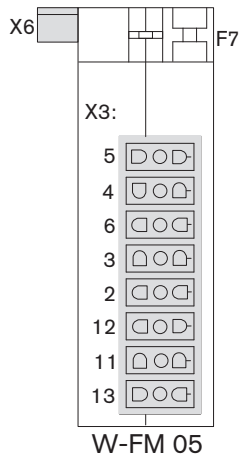
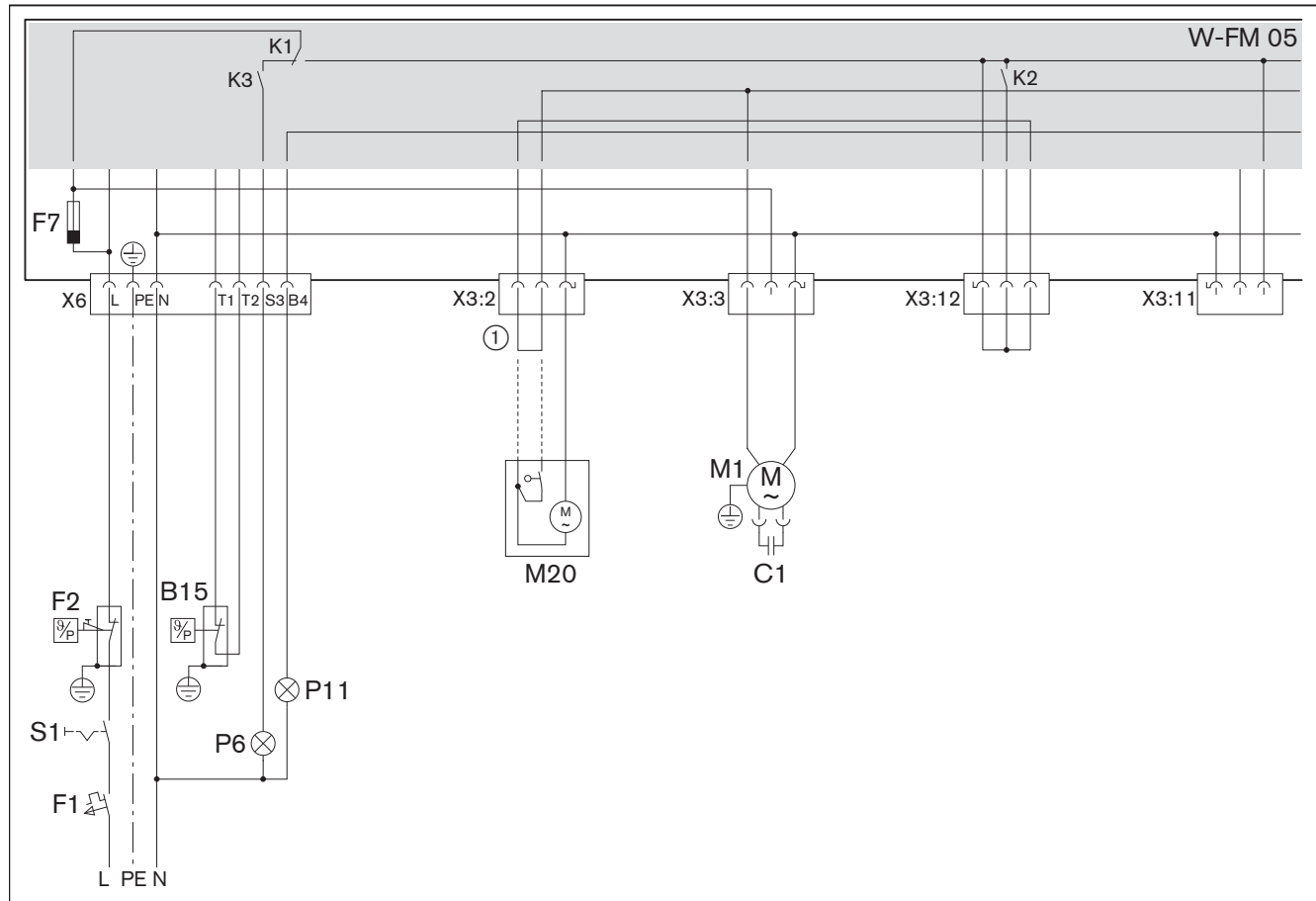
11.1 Conversion table unit of pressure

Bar	Pascal			
	Pa	hPa	kPa	MPa
0.1 mbar	10	0.1	0.01	0.00001
1 mbar	100	1	0.1	0.0001
10 mbar	1 000	10	1	0.001
100 mbar	10 000	100	10	0.01
1 bar	100 000	1 000	100	0.1
10 bar	1 000 000	10 000	1 000	1

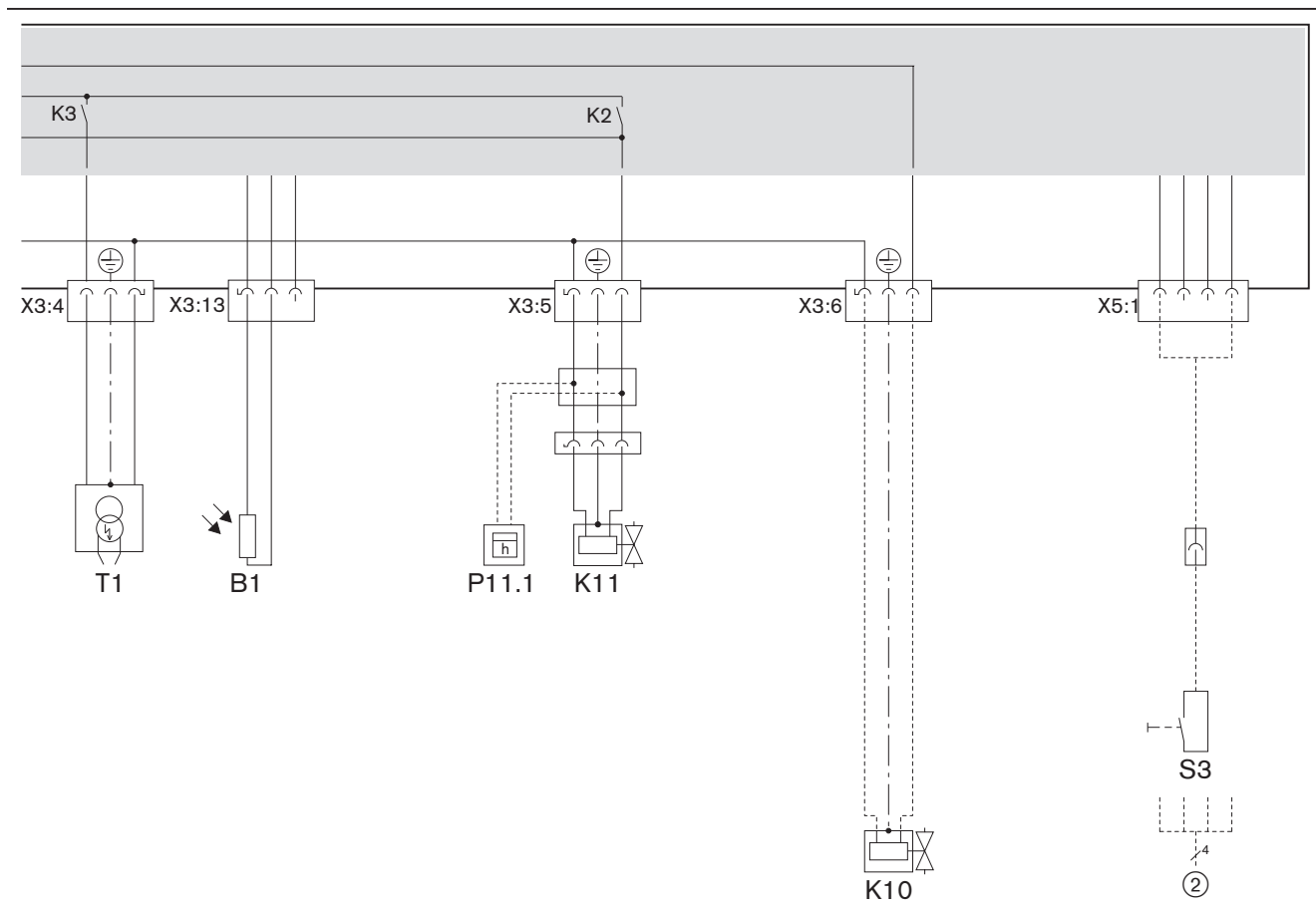
11 Technical documentation

11.2 Wiring diagram

For special version observe wiring diagram supplied.



- B15 Temperature or pressure regulator
- C1 Motor capacitor
- F1 External fuse
- F2 Temperature or pressure limiter
- F7 Internal unit fuse (T6.3H, IEC 127-2/5)
- M1 Burner motor
- M20 Air damper actuator (optional)
- P6 Control lamp lockout (optional)
- P11 Control lamp operation (optional)
- S1 Operating switch
- ① Bridge for air regulator with manual adjustment



- | | |
|-------|------------------------------|
| B1 | Flame sensor |
| K10 | Anti siphon valve (optional) |
| K11 | Solenoid valve |
| P11.1 | Hours counter (optional) |
| S3 | Remote reset (optional) |
| T1 | Ignition unit |
| ② | Bus interface (optional) |

12 Project planning

12 Project planning

12.1 Oil supply

Observe EN 12514-2, DIN 4755, TRÖI and local regulations.

General information relating to the oil supply

- Do not use cathode protection system with steel tanks.
- With oil temperatures $< 5\text{ °C}$ the separation of paraffin can cause oil lines, oil filters and nozzles to become blocked. Avoid placing oil tanks and pipelines in areas subject to frost.
- The oil supply should be installed in such a way that the oil hoses can be connected free of tension.
- Fit oil filter in front of pump, maximum mesh aperture $70\text{ }\mu\text{m}$.

Suction resistance and supply pressure



NOTICE

Pump damage due to excessive suction resistance

A suction resistance greater than 0.4 bar can damage the pump.

- Reduce suction resistance – or – install oil supply pump or suction unit, whilst observing the maximum supply pressure at the oil filter.

The suction resistance depends on:

- suction line length and diameter
- pressure loss of oil filter and other components
- lowest oil level in the oil storage tank (max 3.5 m below the oil pump)

If an oil feeder pump is installed:

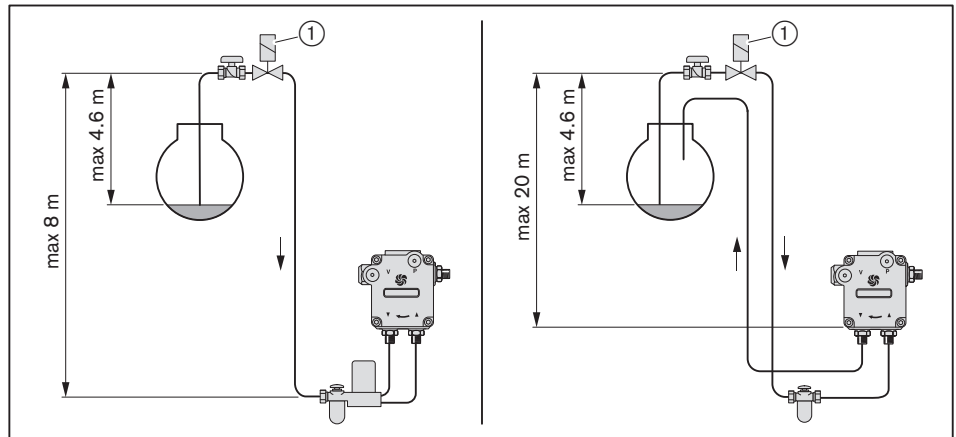
- max 1.5 bar flow pressure at oil filter
- max 0.7 bar flow pressure upstream of automatic de-aerator

Elevated oil level

- If the suction line is leaking the tank can be siphoned dry. An electric anti siphon valve ① can prevent this.
- Observe manufacturers instructions regarding pressure loss caused by anti siphon valve.
- The anti siphon valve must close with a delay and show a pressure relief towards the oil storage tank.

Maintain height differences:

- max 4.6 m between oil level and anti siphon valve
- on single pipe system max 8 m between anti siphon valve and automatic de-aerator
- on two pipe system max 20 m between anti siphon valve and oil pump



12 Project planning

Single pipe oil supply



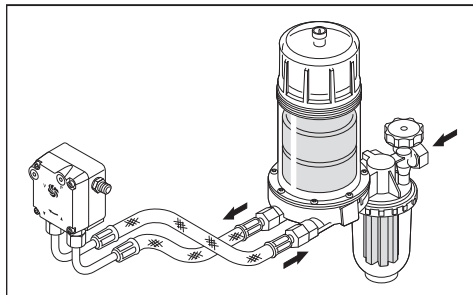
NOTICE

Damage to the oil pump due to incorrect connection

Mixing up supply and return can damage the oil pump.

- Ensure correct connection of oil hoses to the supply and return of the pump.

On single pipe systems, an automatic de-aerator must be fitted in front of the oil pump.



Two pipe system

In a two pipe system the oil pump is vented automatically.

Ring main operation

Weishaupt recommends the use of a ring main when operating several burners.

12.2 Continuous running fan or post-purge



Fire hazard due to failure of the combustion air fan

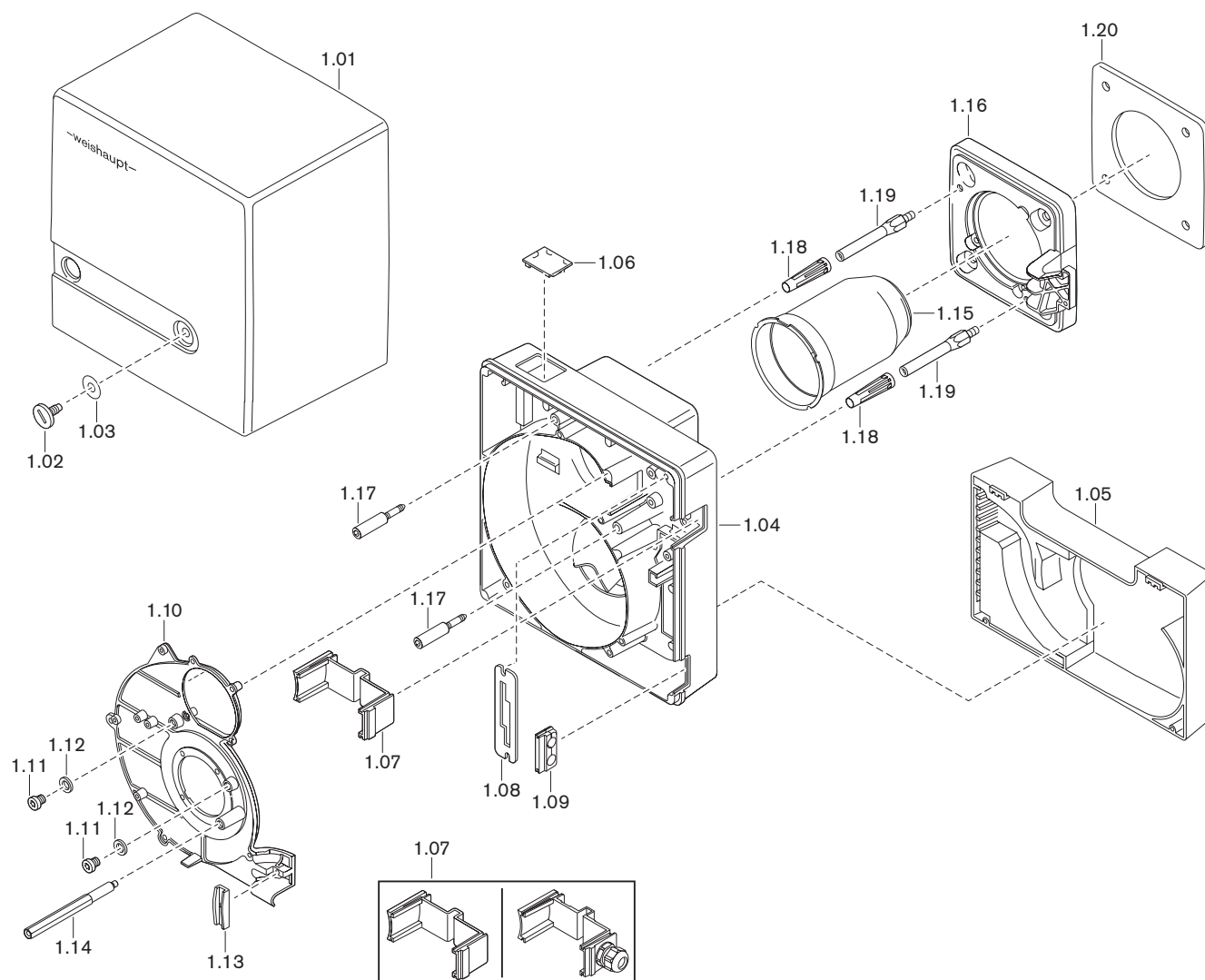
Failure of the combustion air fan (e.g. due to a power failure or defective motor) during operation with continuous running fan or increased post-purge may result in back radiation or hot flue gases flowing back into the burner housing. This could cause a fire.

If fail-safe continuous ventilation or post-purge is required, take appropriate measures, such as:

- ▶ installing compressed air flushing on site with:
 - sufficiently large compressed air tank
 - normally open compressed air valve

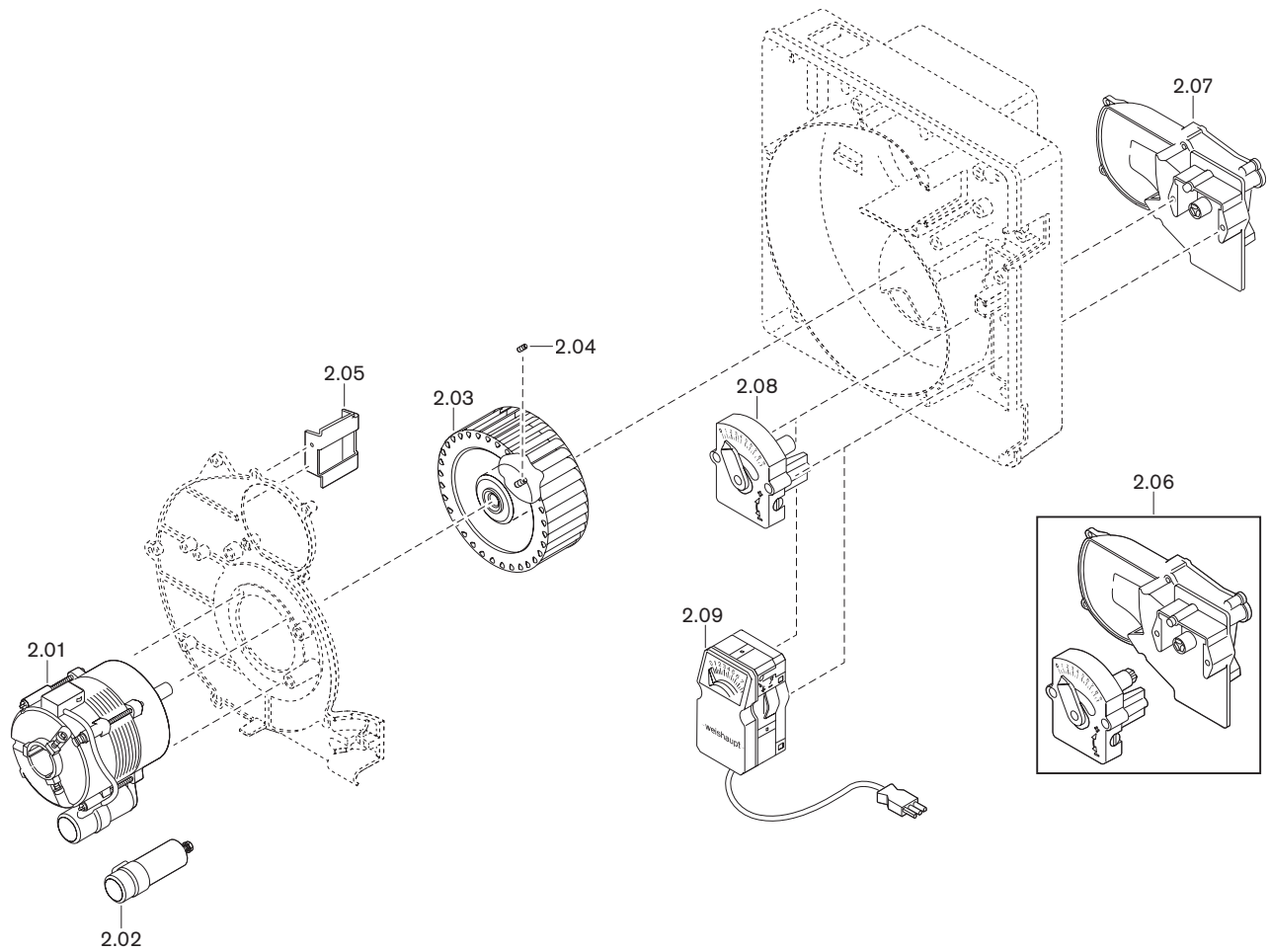
13 Spares

13 Spares



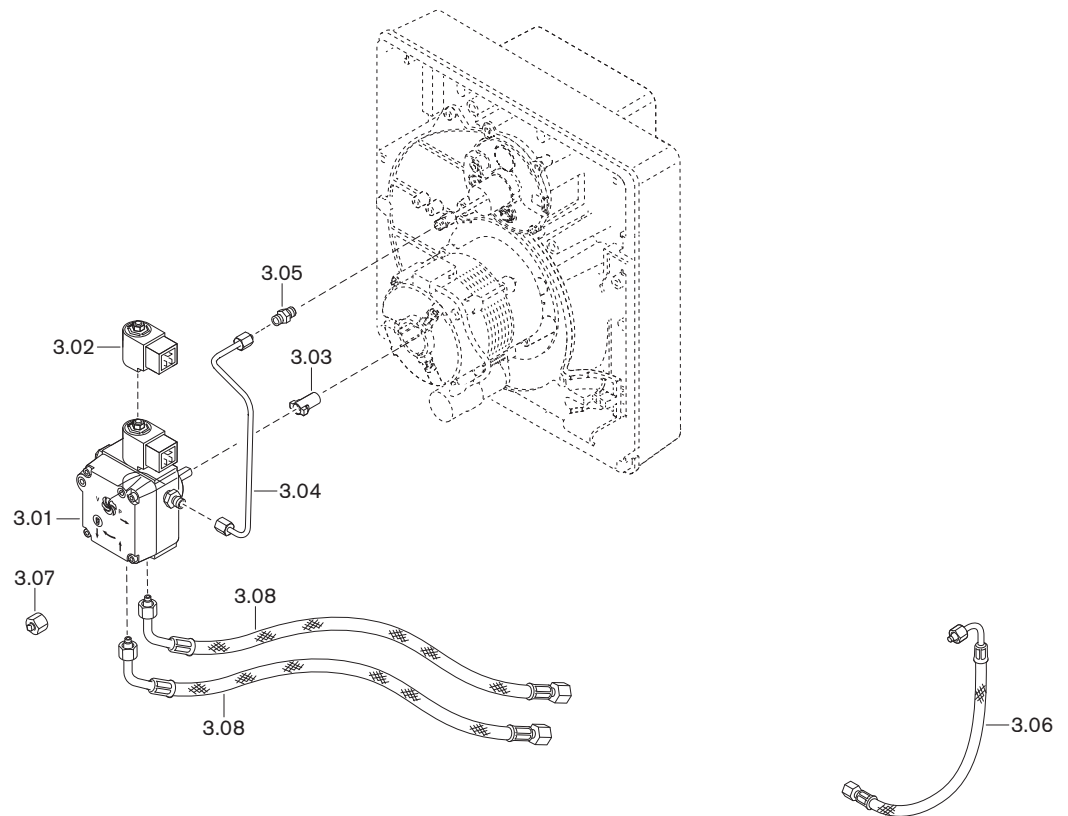
Pos.	Description	Order No.
1.01	Cover complete	241 050 01 022
1.02	Screw M8 x 15	142 013 01 157
1.03	Washer 7 + 0.2 x 18 x 0.6	430 016
1.04	Burner housing	241 050 01 017
1.05	Intake housing complete	241 050 01 012
	– Screw 4 x 30 Torx-Plus	409 325
1.06	View port glass	241 210 01 197
1.07	Cover	
	– housing	241 050 01 077
	– housing with screwed union	240 050 01 062
1.08	Fixing plate for service position	
	– Standard	241 050 01 247
	– WL5 on WTU-S	241 050 01 267
1.09	Grommet for oil hose	241 050 01 177
1.10	Housing cover	241 050 01 037
1.11	Screw G ¹ / ₈ A DIN 908	409 004
1.12	Sealing ring 10 x 13.5 x 1.5 DIN 7603	441 033
1.13	Bracket for oil hose and cable	
	– Standard	241 400 01 367
	– WL5 on WTU-S	241 050 01 327
1.14	Stay bolt cover	
	– Standard	241 050 01 357
	– WL5 on WTU-S	241 050 01 347
1.15	Flame tube	241 050 14 082
1.16	Burner flange	
	– Standard	241 050 01 057
	– WL5 on WTU-S	241 050 01 287
	– Screw ISO 4762 M8 x 25- 8.8	402 500
	– Washer 8.4 DIN 433	430 504
1.17	Screw M6 for burner housing	241 110 01 297
1.18	Sleeve for burner housing	241 050 01 317
1.19	Stay bolt for burner flange	241 050 01 187
1.20	Flange gasket	241 050 01 147

13 Spares



Pos.	Description	Order No.
2.01	Motor ECK02/H-2 230V 50Hz 75W	652 090
2.02	Capacitor 4.0 µF 420V, AC, DB	713 473
2.03	Fan wheel TLR-S 119 x 41.4-L S1 50Hz	241 050 08 012
2.04	Grub screw M6x8 w. ann. cut. edge (Tuflok)	420 549
2.05	Air guide	241 050 01 207
2.06	Air regulator	
	– Standard with manual adjustment	241 050 02 042
	– with actuator 230 V	241 050 02 052
2.07	Intake duct	241 050 02 032
2.08	Manual adjustment	241 050 02 022
2.09	Actuator W-St02/1 220-240V 50Hz	651 047

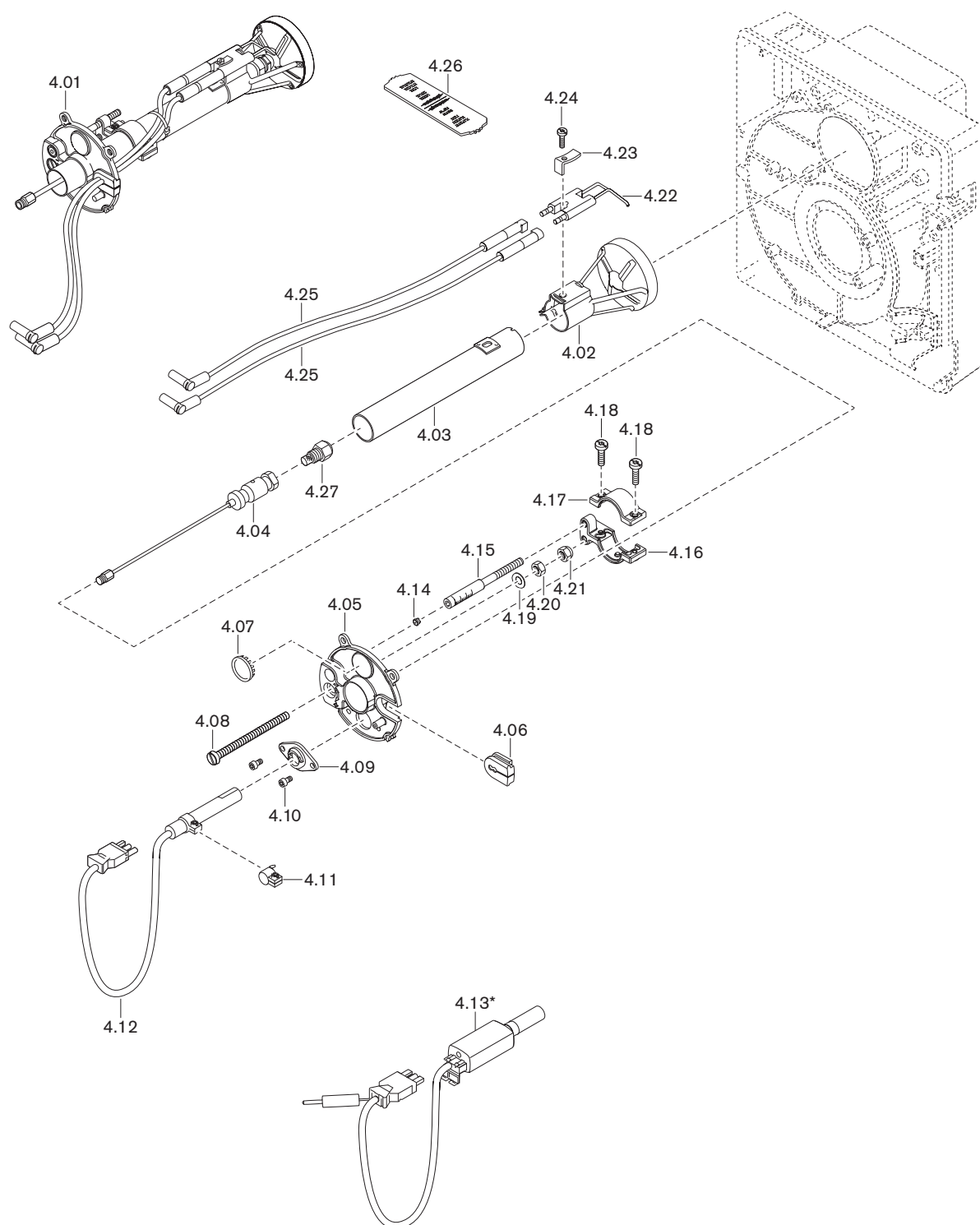
13 Spares



Pos.	Description	Order No.
3.01	Pump ALEV30C 9300 4P0700R 4-18 bar	601 857
	– Filter set with seal	601 107
3.02	Solenoid coil T80 Suntec 220-240V 50-60Hz	604 495
3.03	Plug coupling	652 135
3.04	Oil line pump - supply	241 050 06 028
3.05	Screwed union XG 04-LL	452 020
3.06	Pressure hose DN 4, 286 mm	491 246
	(for installation rotated by 180°)	
3.07	Bypass plug BUZ 06-LL with nut	241 100 06 012
3.08	Oil hose DN 4, 1200 mm	
	– Standard	491 126
	– Fuel GF-B30*	491 316

* Green Fuels, see supplementary manual (Print No. 835910xx)

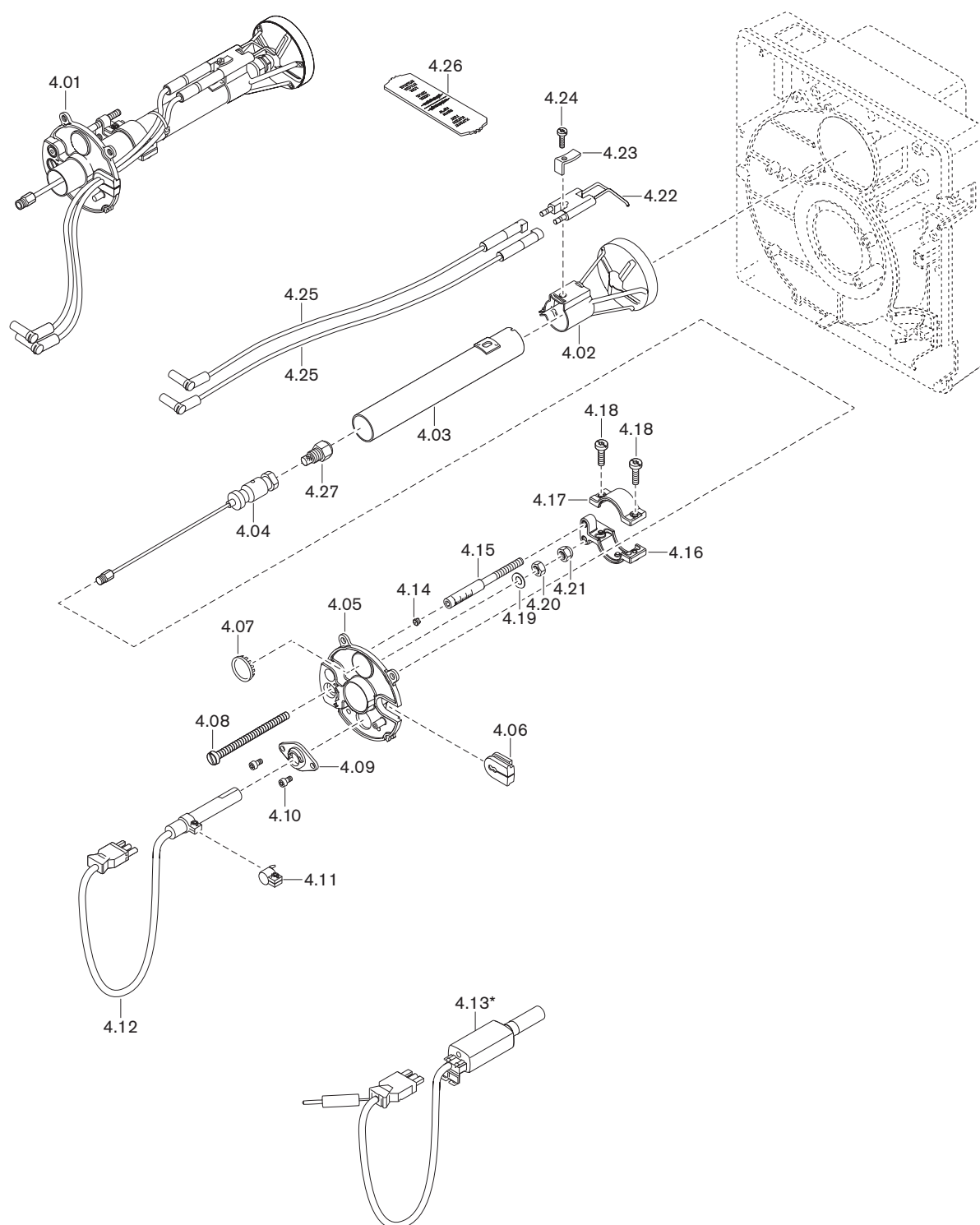
13 Spares



Pos.	Description	Order No.
4.01	Nozzle assembly complete	
	– for flame sensor QRB4	241 050 10 212
	– for flame sensor KLC (fuel GF-P)*	240 050 10 192
4.02	Diffuser	241 200 14 172
4.03	Guide tube with stop	241 110 10 012
4.04	Nozzle head complete	241 110 10 052
4.05	Nozzle assembly cover complete	
	– for flame sensor QRB4	241 050 10 202
	– for flame sensor KLC (fuel GF-P)*	240 050 10 172
4.06	Grommet for ignition cable	241 050 01 157
4.07	View port glass	241 400 01 377
4.08	Adjusting screw M6 x 88	241 400 10 097
4.09	Flange	
	– for flame sensor QRB4	600 682
	– for flame sensor KLC (fuel GF-P)*	600 637
4.10	Screw 4 x 12 Torx-Plus 20IP	409 320
4.11	Strap AKG43 for QRB4	600 681
4.12	Flame sensor QRB4B	241 050 12 072
4.13	Flame sensor KLC (fuel GF-P)*	240 310 12 182
	– Adapter	240 050 12 122
	– Ionisation cable No. 13	232 310 12 012
4.14	Plug 5.25	241 110 10 087
4.15	Indicating bolt M6 x 90	241 110 10 097
4.16	Adjusting lever bottom part	241 110 10 067
4.17	Adjusting lever top part	241 110 10 077
4.18	Screw M4 x 12 Torx-Plus 20IP	409 237
4.19	Spring washer A6 DIN 137	431 615
4.20	Hexagonal nut M6 ISO 4032 -8	411 301
4.21	Hexagonal nut M6 DIN 985 -6	411 302
4.22	Ignition electrode	241 050 10 137
4.23	Tension spring	142 013 10 247
4.24	Screw M4 x 14 Torx-Plus 20IP	409 268
4.25	Ignition cable 370 mm	232 050 11 042
4.26	Setting gauge W5 to W20	241 050 00 027

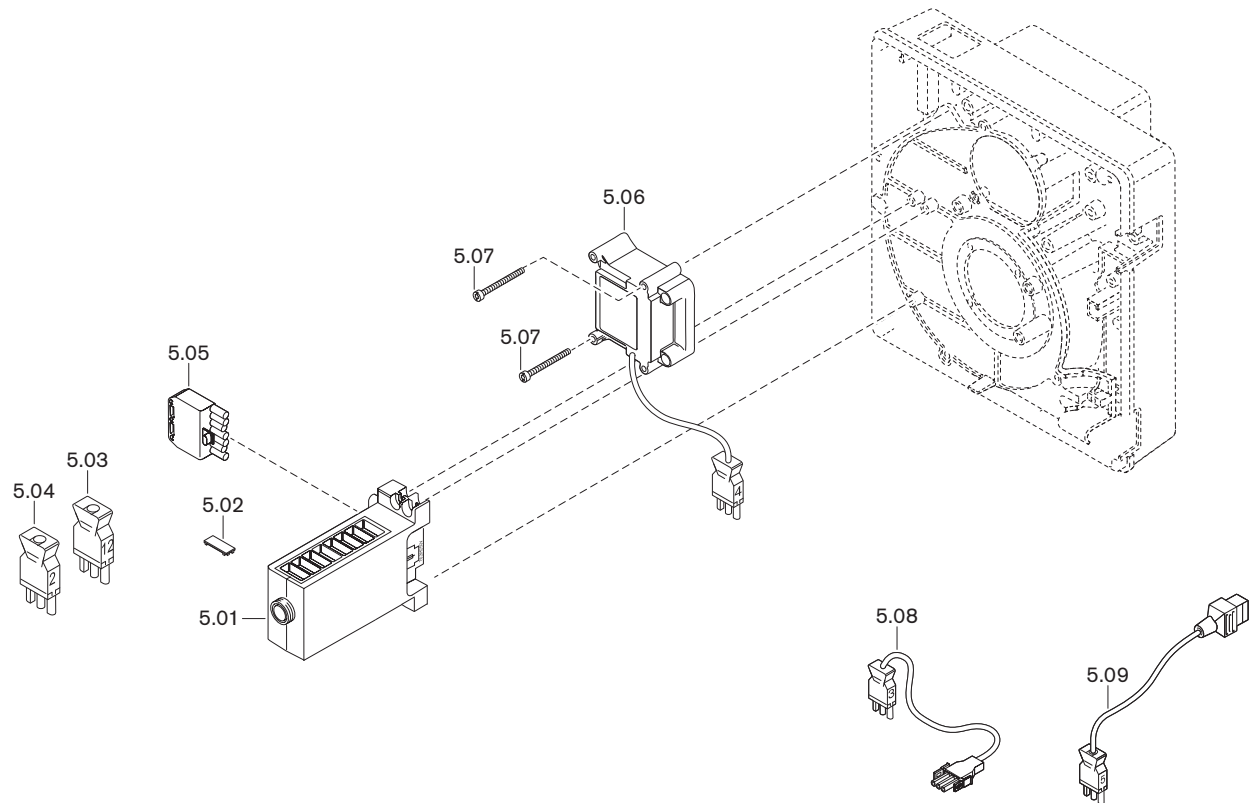
* Green Fuels, see supplementary manual (Print No. 835910xx)

13 Spares



Pos.	Description	Order No.
4.27	Oil nozzle	
	– 0.50 gph 60°SF Fluidics	602 743
	– 0.55 gph 60°SF Fluidics	602 744
	– 0.60 gph 60°SF Fluidics	602 745
	– 0.65 gph 60°SF Fluidics	602 746
	– 0.75 gph 60°SF Fluidics	602 070
	– 0.85 gph 60°SF Fluidics	602 071
	– 0.50 gph 60°HF Fluidics	602 726
	– 0.55 gph 60°HF Fluidics	602 721
	– 0.60 gph 60°HF Fluidics	602 727
	– 0.65 gph 60°HF Fluidics	602 722
	– 0.75 gph 60°HF Fluidics	602 723
	– 0.85 gph 60°HF Fluidics	602 724
	– 0.50 gph 60°ST Steinen	612 200
	– 0.55 gph 60°ST Steinen	612 202
	– 0.50 gph 60°HT Steinen	612 352
	– 0.55 gph 60°HT Steinen	612 353
	– 0.60 gph 60°S Steinen	612 201
	– 0.65 gph 60°S Steinen	612 250
	– 0.75 gph 60°S Steinen	612 203
	– 0.85 gph 60°S Steinen	612 206
	– 1.00 gph 60°S Steinen	612 207
	– 1.10 gph 60°S Steinen	612 208
	– 1.25 gph 60°S Steinen	612 210
	– 0.65 gph 60°H Steinen	612 512
	– 0.75 gph 60°H Steinen	612 513
	– 0.85 gph 60°H Steinen	612 514
	– 1.00 gph 60°H Steinen	612 517
	– 1.10 gph 60°H Steinen	612 518
	– 1.25 gph 60°H Steinen	612 519

13 Spares



Pos.	Description	Order No.
5.01	Combustion manager W-FM 05, 230 V / 50/60 Hz	600 470
	– Micro fuse T6.3H, IEC 127-2/5	483 011 22 457
5.02	Cover clip AGK63	600 312
5.03	Bridging plug No. 12	241 050 12 032
5.04	Bridging plug No. 2	240 200 12 012
5.05	Plug unit ST18/7	716 549
5.06	Ignition unit type W-ZG01V 230 V 100 VA	603 229
5.07	Screw M4 x 42 Combi-Torx-Plus 20IP	409 260
5.08	Plug cable No. 3 motor	241 050 12 062
5.09	Plug cable No. 5 solenoid valve	241 050 12 052

14 Notes

14 Notes

14 Notes

15 Key word index

A		
Air damper	9, 28, 29, 42	
Air damper setting	28	
Air number	32	
Air regulator	42	
Ambient conditions	14	
Ammeter	27	
Anti syphon valve	59	
Aperture	18, 20	
Approval data	14	
Atomising pressure	19, 30	
B		
Bar	55	
Basic setting	41	
Basic settings	28	
Booming	54	
Burner motor	11, 45	
C		
Capacity graph	16	
CO content	32	
Combustion air	6	
Combustion analysis	32	
Combustion chamber pressure	16	
Combustion heat rating	16, 28	
Combustion Manager	11, 25	
Commissioning	26	
Consumption	14	
Conversion table	55	
D		
Default settings	28	
Design lifespan	6, 34	
Diffuser	9, 28, 29	
Diffuser setting	28	
Display	25	
Disposal	7	
Drilling dimension drawing	18	
Ducted air intake	6, 16	
E		
Electrical connection	24	
Electrical data	14	
Electrodes	39	
electrostatic discharge	7	
Emission	15	
Emission class	15	
ESD protective measures	7	
Excess air	32	
Extraneous light	27	
F		
Fan motor	45	
Fan pressure	27, 29	
Fan wheel	9, 44	
Fault	49, 51, 53, 54	
Fault codes	50, 51, 53	
Fault memory	50	
Filter	46, 58	
Flame sensor	11	
flame signal	11, 27	
Flame tube	18	
Flashing codes	51, 53	
Flow	22	
Flow pressure	22, 27, 58	
Flow temperature	22	
Flowchart	12	
Flue gas losses	32	
Flue gas measurement	32	
Flue gas temperature	32	
fuel	14	
Fuel oil	14	
Fuel release	12	
Fusing	14, 47	
G		
Guarantee	5	
H		
Heat exchanger	18	
Hours counter	57	
Humidity	14	
I		
Idle time	33	
Ignition	12	
Ignition electrodes	39	
Ignition unit	11	
Illuminated push button	25, 48, 50	
Indicating bolt	29, 41	
Initialisation time	13	
Installation	18	
Installation elevation	14, 16	
Installation location	6, 18	
Intake housing	42	
Internal unit fuse	47	
L		
Liability	5	
Lifespan	6, 34	
Lockout	48, 49, 51, 53	
M		
Mains voltage	14	
Maintenance position	37	
mbar	55	
Measuring device	27	
Mechanical noises	54	
Mixing head	9, 28, 40, 41	
Mixing pressure	27, 29	
Monitoring current	27	
Motor	11, 45	
N		
Name plate	8	

Noise emission values	15
Nozzle	19, 38
Nozzle assembly	41
Nozzle distance	41
Nozzle selection	19
Nozzle selection table	19

O

Oil feeder pump	58
Oil filter	46, 58
Oil hose	22
Oil nozzle	19, 38
Oil pressure measuring device	27
Oil pump	10, 22, 27, 43, 60
Oil pump filter	46
Oil supply	22, 58, 59
Oil temperature	58
Operating hours counter	57
Operating problems	54
Operational failure	33

P

Pa	55
Pascal	55
Personal protective equipment	6
Plug assignment	56
Post-ignition time	13
Post-purge	12
Post-purge time	13
PPE	6
Pre-filter	58
Pre-purge	12
Pre-purge time	13
Pressure gauges	27
Pressure measuring device	27
pressure regulating screw	30
Problem solving	54
Program sequence	12
Protective equipment	6
Pulsating	54
Pump	10, 22, 27, 43, 60
Pump filter	46
Pump pressure	19, 27, 30

R

Rating	16
Recommended nozzles	19
Refractory	18
Remote reset	24
Reset	50
Reset button	25
Return	22
Ring main operation	60

S

Safety measures	6
Safety symbols	6
Safety time	12, 13
Sequence diagram	10

Serial number	8
Service contract	34
Service interval	34
Service plan	36
Service position	37
Servicing	34
Setting dimension	41
Setting gauge	41
Setting screw	41
Shutdown	33
Signal lamp	25
Single pipe oil supply	60
Solenoid valve	10
Soot deposit	54
Sound levels	15
Sound power level	15
Sound pressure level	15
Spares	63
Stability problems	54
Standards	14
Storage	14
Suction resistance	22, 58
Supply pressure	22, 58
Supply temperature	22
Symbol	6

T

Temperature	14
Transport	14
Two pipe system	60
Type	8
Type key	8

U

Unit of pressure	55
------------------------	----

V

Vacuum	58
Vacuum gauge	27
Voltage supply	14

W

Warning label	6
Warning sign	6
Weight	17
Wiring diagram	56

The complete program: Reliable technology and prompt, professional service

	<p>W Burners up to 700 kW</p> <p>The compact burners, proven millions of times over, are economical and reliable. Available as gas, oil and dual fuel burners for domestic and commercial applications.</p>	<p>Wall-hung condensing boilers for gas up to 800 kW</p> <p>The wall-hung condensing boilers WTC-GW have been developed to meet the highest demands in ease of operation and efficiency. Modulating operation means these units operate quietly and economically.</p>	
	<p>monarch® WM Burners and Industrial Burners up to 12,000 kW</p> <p>These legendary industrial burners are durable and versatile. Numerous variations of oil, gas and dual fuel burners meet a wide range of applications and capacity requirements.</p>	<p>Floor-standing condensing boilers for oil and gas up to 1,200 kW</p> <p>The floor-standing condensing boilers WTC-GB (up to 300 kW) and WTC-OB (up to 45 kW) are efficient, low in pollutants and versatile in use. Even the largest capacities can be covered by cascading up to four gas condensing boilers.</p>	
	<p>WKmono 80 Burners up to 17,000 kW</p> <p>The WKmono 80 burners are the most powerful monoblock burners from Weishaupt. They are available as oil, gas or dual fuel burners and are designed for tough industrial application.</p>	<p>Solar systems</p> <p>The stylish flat-plate collectors are the ideal complement for any Weishaupt heating system. They are suitable for solar water heating and for combined heating support. With versions for on-roof, in-roof and flat roof installations, solar energy can be utilised on almost any roof.</p>	
	<p>WK Burners up to 32,000 kW</p> <p>These industrial burners of modular construction are adaptable, robust and powerful. Even on the toughest industrial applications these oil, gas and dual fuel burners operate reliably.</p>	<p>Water heaters/Energy storage</p> <p>The diverse program of potable water and energy storage for various heat sources includes storage volumes of 70 to 3,000 litres. In order to minimize storage losses, potable water cylinders from 140 to 500 litres are available with highly efficient insulation using vacuum insulation panels.</p>	
	<p>MCR Technology / Building Automation from Neuberger</p> <p>From control panels to complete building management systems - at Weishaupt you can find the entire spectrum of modern control technology. Future orientated, economical and flexible.</p>	<p>Heat pumps up to 180 kW (Single device)</p> <p>The heat pump range offers solutions for the utilisation of heat from the air, the soil or ground water. Some systems are also suitable for cooling buildings.</p>	
	<p>Service</p> <p>Weishaupt customers can be assured that specialist knowledge and tools are available whenever they are needed. Our service engineers are fully qualified and have extensive product knowledge, be it for burners, heat pumps, condensing boilers or solar collectors.</p>	<p>Geothermal probe drilling</p> <p>With its daughter company, BauGrund Süd, Weishaupt also offers geothermal probe and well drilling. With the experience of more than 17,000 systems and more than 3.2 million meters of drilling, BauGrund Süd offers a comprehensive service program.</p>	